

Gogebic County



2023-2027 Recreation Plan

Prepared for: Gogebic County, 200 N Moore St, Bessemer, MI

Prepared by: Western Upper Peninsula Planning
and Development Region
400 Quincy St 8th Floor, Hancock, MI



Table of Contents

<u>Section</u>	<u>Page</u>
Introduction	1
Community Description	2
Location	2
Population, Housing, and Socioeconomic Characteristics	4
Economy and Resources	6
Transportation	7
Land Use	7
Topography	8
Geology and Soils	8
Climatic Conditions	9
Water Resources	10
Vegetation and Wildlife	10
Administrative Structure and Finances	11
Recreation Inventory: County-Owned Sites	13
Little Girl's Point County Park	13
The Lodge	16
Lake Gogebic County Park	17
McDonald Lake County Park	16
Mosinee Grade Recreation Area	20
Powers Road Recreation Area	20
Other Hunter Walking Trails	20
Gogebic County Fairgrounds	20
Accessibility Assessment	25
Previous DNR Recreation Grants	25
Recreation Inventory: Other Key Sites	27
Iron Belle Trail	27
Copper Peak Recreation Complex	27
Ski Resorts	28
Motorized Recreation Trails	29
Nonmotorized Recreation Trails	29
Planning Process	31
Goals and Objectives	32
Action Program	34
Capital Improvements	34
Potential Funding Sources	36
Appendix	37

List of Figures

Figure		Page
Figure 1.	Seven Principles of Universal Design	5
Figure 2.	Forestry and Parks Organizational Chart	11

List of Maps

Map		Page
Map 1.	Gogebic County Location	3
Map 2.	Gogebic County Recreation Sites	14
Map 3.	Little Girl's Point County Park	15
Map 4.	Lake Gogebic County Park	18
Map 5.	McDonald Lake County Park	19
Map 6.	Mosinee Grade Recreation Area	21
Map 7.	Powers Road Recreation Area	22
Map 8.	Harris Creek Walking Trail	23
Map 9.	Ketola Grade Hunter Walking Trail	24

List of Tables

Table		Page
Table 1.	Area Population Totals	4
Table 2.	Gogebic County and State Population Characteristics	6
Table 3.	Gogebic County Climate, 2006-2020	9
Table 4.	Forestry and Parks Commission Finances	12
Table 5.	Capital Improvements Plan	35
Table 6.	Potential Funding Sources	36

Introduction

Recreational opportunities have long been an important aspect of the quality life in Gogebic County and are one of the primary reasons people choose to live and vacation here. This became truer than ever in the early days of the COVID-19 Pandemic, when many visitors were exposed to outdoor recreation for the first time, and both new and long-time visitors became more open to moving to rural areas. Gogebic County is committed to ensuring that the region's minimally developed recreation assets are supplemented by developed County-owned facilities and public lands that are specially equipped for certain types of active recreation. The 2023-2027 Gogebic County Recreation Plan has been written to guide future parks and recreation improvements. The intent of this plan is to evaluate the county's existing recreation facilities, determine future needs, and establish a program of facility improvements to county-owned facilities.

The Gogebic County Forestry and Parks Commission has been responsible for planning, administration, and oversight of the County Parks and County Forest since 2001. Prior to that, the parks had been administered by the Gogebic County Road Commission. The parks, built in the 1920s and 1930s as Works Progress Administration and Civilian Conservation Corps projects, had fallen into a state of disrepair by 2001 due to budget limitations. The transfer of parks to the Forestry and Parks Commission, part of the County Government, enabled the parks to become a self-sustaining enterprise. Ultimate responsibility for the parks remains with the Gogebic County Board of Commissioners.

By developing this plan, Gogebic County endeavors to create an affordable and achievable improvement program that will provide for current and future recreational needs. The Forestry and Parks Commission has been highly effective in its role: About half of the 80 capital improvement projects included in recreation plans from 2001 to 2022 have reached completion, in addition to several projects not specifically identified in the plans.

All projects completed under the Forestry and Parks Commission from 2001 to 2010, and most subsequent projects, were paid for with County financial resources. DNR Trust Fund grants to the County improved Little Girl's Point, a County-owned site (2010); helped to create two Iron Belle trail segments, with the County acting as fiduciary (2014 and 2018); and financed acquisition of 4,000 acres of land to expand the County Forest (grant awarded in 2020 but still in progress).

Community Description

Location

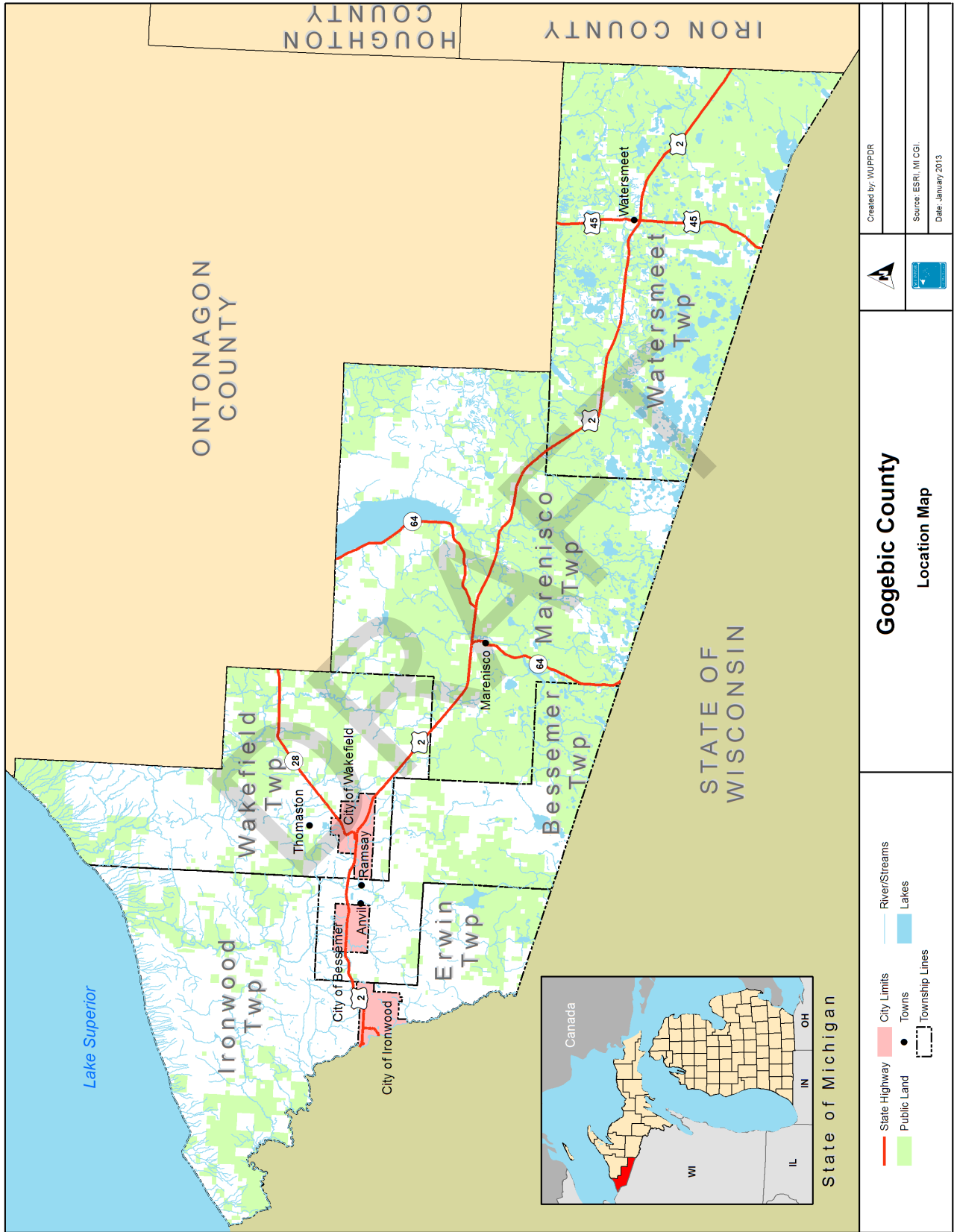
Gogebic County is located in the extreme west of Michigan's Upper Peninsula (see **Map 1**). It is bordered by Lake Superior and Ontonagon and Iron (Michigan) counties to the north and east. The State of Wisconsin and the Montreal River border the county to the west and south. The total land area of the county is 1,105 square miles. The county is rife with public lands, foremost being the Ottawa National Forest; Gogebic County has the most national forestland of any county in Michigan. The longest straight-line distance of the county is northwest to southeast, a distance of nearly 80 miles.

The county contains numerous lakes and streams, and over 90 percent of land is forested. Three percent of the total area (39 square miles) is surface water, in bodies of 40 acres or more. The largest inland lake in the county and Upper Peninsula is Lake Gogebic, with approximately the southern half located in Gogebic County. Most of the county is in the Lake Superior watershed, particularly of the Black, Ontonagon, and Presque Isle rivers.

Established as a county in 1887, Gogebic contains three incorporated cities (Ironwood, Bessemer, and Wakefield) and six townships (Bessemer, Erwin, Ironwood [Charter], Marenisco, Wakefield, and Watersmeet). County operations are governed by a seven-member Board of Commissioners. The County Seat is the City of Bessemer.



Map 1. Gogebic County Location



	Created by: WUPDR
	Source: ESRI, MI CGI Date: January, 2013
Gogebic County Location Map	
<ul style="list-style-type: none"> — State Highway Public Land City Limits ● Towns Township Lines — River/Streams Lakes 	State of Michigan

Population, Housing, and Socioeconomic Characteristics

Based on the 2020 Decennial Census, 87 percent of Gogebic County's population is concentrated on the west end of the county in the cities of Bessemer, Ironwood, and Wakefield and the adjacent townships of Ironwood, Bessemer, Wakefield, and Erwin. The remaining 13 percent is found in Marenisco and Watersmeet Townships in the south-central and southeast parts of the county, respectively. These townships make up close to half of the county's land area, and the majority of their land is within the Ottawa National Forest. The county's population of 14,380 was a decline of 12.5 percent since 2010, but much of the decline can be attributed to the 2018 closure of Camp Ojibway Correctional Facility near Marenisco. See **Table 1** for details.

Table 1. Area Population Totals

Gogebic County (2020)	14,380	
Gogebic County (2010)	16,427	
Population Change (2010-2020)	- 2,047 (-12.5%)	
Municipality	Total Persons (2020)	Percent of Total
Bessemer (City)	1,805	12.6%
Ironwood (City)	5,045	35.1%
Wakefield (City)	1,702	11.8%
Bessemer Township	1,135	7.9%
Erwin Township	267	1.9%
Ironwood Township	2,214	15.4%
Marenisco Township	455	3.2%
Wakefield Township	301	2.1%
Watersmeet Township	1,456	10.1%

Source: Decennial Census 2010 & 2020, U.S. Census Bureau

The County population is 90.8% White of one race, with a significant (3.6%) American Indian population located primarily in Watersmeet Township on the Lac Vieux Desert Indian Reservation. Residents of two or more races comprised 4.3% of the population.

Based on 2016-2020 American Community Survey (ACS) Five-Year Estimates (ACS), 15.7% of Gogebic County's civilian noninstitutionalized population has a disability. This compares to 14.2% in the State of Michigan. Accessibility is taken into account in local recreation planning, and recreation facilities and sites are upgraded to meet universal design guidelines as improvements are made (see **Figure 1**).

Figure 1. Seven Principles of Universal Design

1. **Equitable Use:** The design is useful and marketable to any group of users.
2. **Flexibility in Use:** The design accommodates a wide range of individual preferences and abilities.
3. **Simple and Intuitive Use:** Use of the design is easy to understand.
4. **Perceptible Information:** The design communicates necessary information effectively to the user.
5. **Tolerance for Error:** The design minimizes hazards and the adverse consequences of accidental or unintentional actions.
6. **Low Physical Effort:** The design can be used efficiently and comfortably.
7. **Size and Space for Approach and Use:** Appropriate size and space is provided for approach and use

Special consideration should also be given to Gogebic County's population aged 65 and older, of which approximately one-third has a disability. Population projections in 2019 by the State of Michigan Bureau of Labor Market and Strategic Initiatives foretell a steady increase in the population age 65 and older through 2030, even as the total county population was projected to decline¹. The population under 15 years of age, which requires much different recreation facilities, was projected to fall slightly. As of the 2016-2020 ACS, the county's median age is 50.0, an increase of 1.7 years over the past five years, and compared with the state's current 39.8. See **Table 2** for basic population characteristics².

¹The 2020 Census population was considerably greater than the 2020 projection; however, the overall aging trend is expected to remain as projected.

²Due to the manner and timing of data collection, the ACS total county population differs from that of the 2020 Decennial Census.

Table 2. Gogebic County and State Population Characteristics

	County		State	
	Persons	% of Total	Persons	% of Total
Total (2016-20 ACS)	14,715		9,973,907	
Male	7,779	52.9%	4,911,965	49.2%
Female	6,936	47.1%	5,061,942	50.8%
Under 5 Years	562	3.8%	568,326	5.7%
5 to 19 Years	2,031	13.8%	1,859,662	18.6%
20 to 44 Years	3,953	26.9%	3,146,457	31.5%
45 to 64 Years	4,264	29.0%	2,686,621	26.9%
65 Years and over	3,905	26.5%	1,712,841	17.2%
Median Age (years)	50.0		39.8	
Total (2020 Decennial Census)	14,380		10,077,381	
White	13,052	90.8%	7,444,974	73.9%
Black or African American	79	0.5%	1,376,579	13.7%
American Indian and Alaska Native	523	3.6%	61,261	0.6%
Asian or Pacific Islander	35	0.2%	334,300	3.3%
Other single races	67	0.5%	221,851	2.2%
Two or more races	621	4.3%	635,315	6.3%

Economy and Resources

Based on the 2021 Quarterly Census of Employment and Wages, Gogebic County's total employment was 3,341 in the private sector and 1,427 in government. The top private industry sectors by employment were manufacturing (692) and retail trade (682), followed by health care and social assistance (508) and accommodation and food services (488). The last of these, closely aligned with the tourism economy, is a large decline since the 2015 employment reported in the previous recreation plan, but does not reflect the trend of tourism itself. Visitor numbers are hard to come by, but consensus of community leaders in the county is that tourism has been growing since at least 2020. Western Upper Peninsula Planning and Development Region is currently developing a regional economic impact analysis of tourism that will include data specific to Gogebic County and key visitor destinations.

The tourism industry is focused on the wealth of natural resources located within the county, including the Ottawa National Forest; Gogebic County Forest; commercial forestland, much of which is publicly accessible for fishing, hunting, and trapping; several alpine ski hills, including

two large resorts; abundant water bodies; and hundreds of miles of ski/snowshoe, snowmobile, UTV, and mountain bike trails. Gogebic County is also home to the Black River National Forest Scenic Byway and the Iron Belle Trail system. The Iron Belle is comprised of two routes within the county: the North Country Trail, a hiking route along the northern part of the county that extends from New York to North Dakota; and a southern bicycling route that is mainly concurrent with Highway US 2. The hiking and biking routes converge in a paved segment from Ironwood to Ramsay (near Bessemer) at the west end of the county.

In Watersmeet, at the east end of the county, the Lac Vieux Desert Band of Lake Superior Chippewa operates the Northern Waters Casino Resort, which includes a 200-acre golf course. Also near Watersmeet is the Sylvania Wilderness, a key component of the Ottawa National Forest that offers camping, fishing, and hiking, with a heavy basis on water travel and portaging.

Along with the tourism industry, there has been success in attracting and growing small, specialized industrial firms to the area. Industrial parks created in the 1990s are now home to several manufacturers, accounting for the county's hundreds of manufacturing employees. Gogebic Community College in Ironwood provides a diversity of career and education opportunities in the area and is itself one of the county's largest employers.

Transportation

Gogebic County is served by three federal highways: US 2, 45, and 51. US 51 joins with U.S. Route 2 in Hurley, Wisconsin less than one mile from Ironwood. Two major state highways also serve the county: M-28 and M-64. The Gogebic County Road Commission and municipalities maintain numerous local roads. The Gogebic-Iron County Airport in Ironwood Township, co-operated with Iron County, Wisconsin, provides daily Essential Air Service flights to Minneapolis and Chicago via Denver Air Connection jets. Intercity bus service is provided by Indian Trails at several stops along US 2, transporting passengers across the Upper Peninsula, into Wisconsin, and to Michigan's Lower Peninsula. Gogebic County Transit Authority operates public transit "flex routes" between Ironwood and Wakefield and between Ironwood and Watersmeet, as well as localized demand-response transit service.

Land Use

Gogebic County land use ranges from concentrated industry to undeveloped forest. Most of the population and urbanized development is in the western end of the county around the cities of Ironwood, Bessemer, and Wakefield and in the smaller pockets of Marenisco and Watersmeet. Zoning is in effect in all cities and townships, and long-established parks are recognized and protected within local ordinances. Several local governments in the county maintain up-to-date

comprehensive and/or recreation plans.

Undeveloped forests make up the majority of land cover in the county. These are tremendous assets for recreational development. Gogebic County is home to the only county forest program in the State of Michigan, and the program is financially self-sustaining. Though the forest accommodates a variety of recreation opportunities, accessible through an extensive network of roads and trails, another important purpose is to provide for timber sales, which are the primary funding source of the forestry program. Most forest cover is harvestable land dominated by mixed hardwoods and a lesser predominance of coniferous trees.

As of its FY 2021 Annual Report, the Gogebic County Forestry and Parks Commission administers 50,402 acres under its own jurisdiction and has timber rights to an additional 374 acres. The Commission maintains an ongoing forest inventory of relevant information on each stand to assist in the forest planning process. Inventory and reconnaissance focus on post-harvest stands and updates to data approaching 15 years old, with a goal inventory 10% of the forest annually.

Topography

Gogebic County contains two belts of undulating terrain. The first of these is the Gogebic Range, which consists of igneous formations and contains iron ore bodies extending from the Montreal River to Lake Gogebic. The second belt, the Gogebic Highlands, consists of steep-sloped primarily clay bluffs extending from Little Girl's Point to the Porcupine Mountains.

Geology and Soils

The various soil associations found in Gogebic County have been placed under six categories by the Natural Resources Conservation Service. They are upland areas dominated by 1) loamy soils, 2) loamy soils with associated rock outcrops, 3) loamy soils with associated sandy soils, 4) organic soils with associated wet loams, 5) heavy loamy soils, and 6) clayey, lacustrine soils. Within these categories, there are nine general soils associations. On-site inspection of soils, slope, and geology are essential when planning for development. For example, a particular site may have severe limitations for septic tank and drain field installation due to poorly drained soils, or bedrock near the surface may pose problems for construction of basements.

Lake Gogebic County Park and Little Girl's Point are both located in areas known to have moderate to severe limitations for recreational land use development. Therefore, a suitability analysis must be performed for each planned facility. Soils information, including slope, wetness, stoniness, and texture, helps to define the limitations imposed. Context-sensitive design concepts can help minimize the impact of facilities.

Climatic Conditions

The climate of Gogebic County is characterized by short, cool summers with long, cold winters. On average, the first date of temperature below 32 degrees Fahrenheit can take place anywhere from late August in the eastern part of the county to as late as early October in the western part



along the Lake Superior shore. The average date for the last freezing temperature in spring can take place from May in the west along Lake Superior to June in the eastern interior. **Table 3** provides climatic data for Ironwood in the west and Watersmeet in the east. Data available from the National Ocean and Atmospheric Administration (NOAA) have changed since the previous recreation plan, with only liquid precipitation measurements available from the Watersmeet station and annual snowfall not available from either station. In general, though, the west side of the county receives more snow than the east side. Temperatures in Ironwood have generally increased since the previous recreation plan’s NOAA dataset.

Table 3. Gogebic County Climate, 2006-2020

Weather Characteristic	Ironwood	Watersmeet
Warmest month by average temperature	July	
Average temperature	66.9°	
Coldest Month by average temperature	February	
Average temperature	12.5°	
Average maximum temperature, summer	74.9°	
Average minimum temperature, summer	53.6°	
Average maximum temperature, winter	22.8°	
Average minimum temperature, winter	6.2°	
Average precipitation, summer	12.1"	12.8"
Average precipitation, winter	6.2"	4.4"

*Notes: Temperatures in degrees Fahrenheit; precipitation in form of liquid water
Source: NOAA Climate Normals, 2006-2020*

Water Resources

Gogebic County is traversed by numerous rivers and streams and is dotted with inland lakes. Notable rivers include the Montreal, Black, Presque Isle, and Ontonagon. Notable lakes include Lake Gogebic, Lac Vieux Desert, Cisco Chain of Lakes, Presque Isle River Flowage, McDonald Lake, Black River Lake, Thousand Island Lake area, and numerous lakes of the Sylvania Wilderness in Watersmeet Township.

Vegetation and Wildlife

Fifty-five percent of Gogebic County's overall forestland is of the Northern Hardwoods type (dominated by maple and birch). The second most extensive type of forest cover in the County is aspen. The county is also interspersed with numerous conifer swamps, containing tamarack, cedar, balsam, and white and black spruce. As previously mentioned, the Gogebic County Forest is composed of this same mixture of hardwood and coniferous tree types. The Sylvania Wilderness has a notable stand of old-growth white pine.

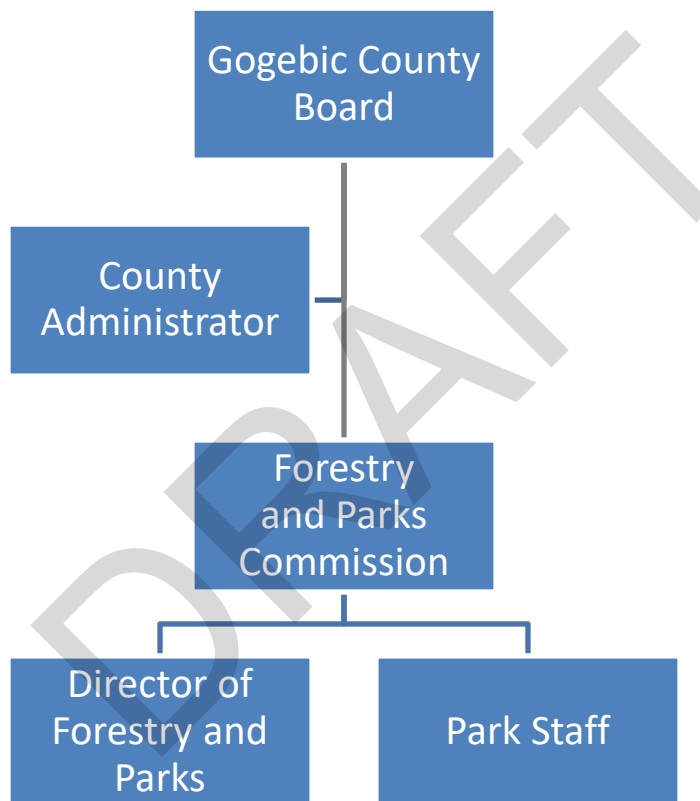
Certain animal habitats in the county warrant special consideration. A deeryard, for example, is a gathering place for whitetail deer during the winter season when there is a shortage of food. The lures of a deeryard are reduced snow depth, which provides greater ability to find food, and the thermal cover given by the conifer canopy. Deeryards dwindle in number over the course of a winter, affecting the deer population accordingly.

The county also contains Bald Eagle nesting areas which can also be utilized by osprey and great blue heron. There are scattered waterfowl nesting areas in Marenisco, Bessemer, and Watersmeet Townships, which are frequented by ducks, geese, cranes, and kingfishers. Other wildlife known to inhabit the county include black bear, coyote, gray wolf, fox, beaver, rabbit, muskrat, squirrel, chipmunk, and lynx.

Administrative Structure and Finances

Parks are administered by the Gogebic County Forestry and Parks Commission (appointed by the County Board of Commissioners) and the Forestry and Parks Director, who is responsible for day-to-day operations of the park system and the County Forest. (See **Figure 2.**) The Gogebic County Forestry and Parks Commission makes final decisions on the parks. The Forestry and Parks Commission meets the third Thursday of the month, and its meetings are open to the public.

Figure 2. Forestry and Parks Organizational Chart



The Forestry and Parks Commission and its operations are financially self-sustaining (with the exception of project-specific external grant funding). Revenues and expenditures in 2021 are shown in **Table 4.**

Table 4. Forestry and Parks Commission Finances, FY 2021

Component	Revenues	Expenditures	Net
Lake Gogebic County Park	\$80,146	\$53,804	
Little Girl's Point & Lodge	\$79,385	\$112,184*	
Other	\$77,172		
TOTAL PARKS	\$236,703	\$165,988	\$70,715
TOTAL FORESTRY	\$874,708	\$648,163	\$226,545
TOTAL COMMISSION	\$1,111,411	\$814,151	\$297,260

** Includes dredging of Oman's Creek, cost covered by a grant classified as "Other" revenue*

Lake Gogebic County Park and Little Girl's Point both have seasonal caretakers. Basic facilities maintenance is performed by staff, but major repairs are put out to bid. The primary source of income for the Parks operation of the Commission is camping fees. Timber sales, the major source of income on the Forestry side, provided an annual average of \$922,217 in revenue from 2017 through 2021 – an increase of 31.4% since the preceding five-year period.

Little Girl's Point appears to have experienced a significant funding deficit in FY 2021; however, this was due to the expense of Oman's Creek Boat Launch dredging – \$40,000 which was covered by a DNR grant classified as "Other" revenue.

In recent years the Commission has partnered with several organizations. One example is partnership with Gogebic Conservation District, DNR, and the Ruffed Grouse Society to create hunter walking trails and wildlife openings on County Forestland to be managed as Grouse Enhanced Management Sites (GEMS). Deer Habitat Improvement Grants were awarded from DNR to the Conservation District for the GEMS. Some local businesses are also taking part in this partnership by offering a discount to hunters and visitors who show their pictures taken in front of the GEMS sign.

Another grant was recently received from Enbridge Inc. for new playground equipment at Lake Gogebic County Park after a funding request for a DNR Passport grant was not successful. Other groups the Commission has worked with include the United States Forest Service, Michigan State University Extension, Wisconsin County Forest Association, Gogebic Range Trail Authority, Boy Scouts, and private forest industry.

Recreation Inventory: County-Owned Sites

Gogebic County owns and operates two parks with modern campgrounds: one on Little Girl's Point on Lake Superior and the other at the southwest end of Lake Gogebic. The County also owns a park with a rustic campground on the north end of McDonald Lake as well as the Powers Road Recreation Area and three hunter walking trails. Undeveloped County-owned forests allow public access for suitable recreation activities.

Aside from the Forestry and Parks Commission sites, the County has played a role in funding for the Iron Belle Trail within the county. It also owns the Gogebic County Fairgrounds, which are administered by a separate Fair Board.

In addition to the sites under County purview, a preexisting inventory of all known sites in the county is included as **Appendix A. Map 2** shows the location of County-owned and other recreation sites, as well as land ownership.

Little Girl's Point County Park

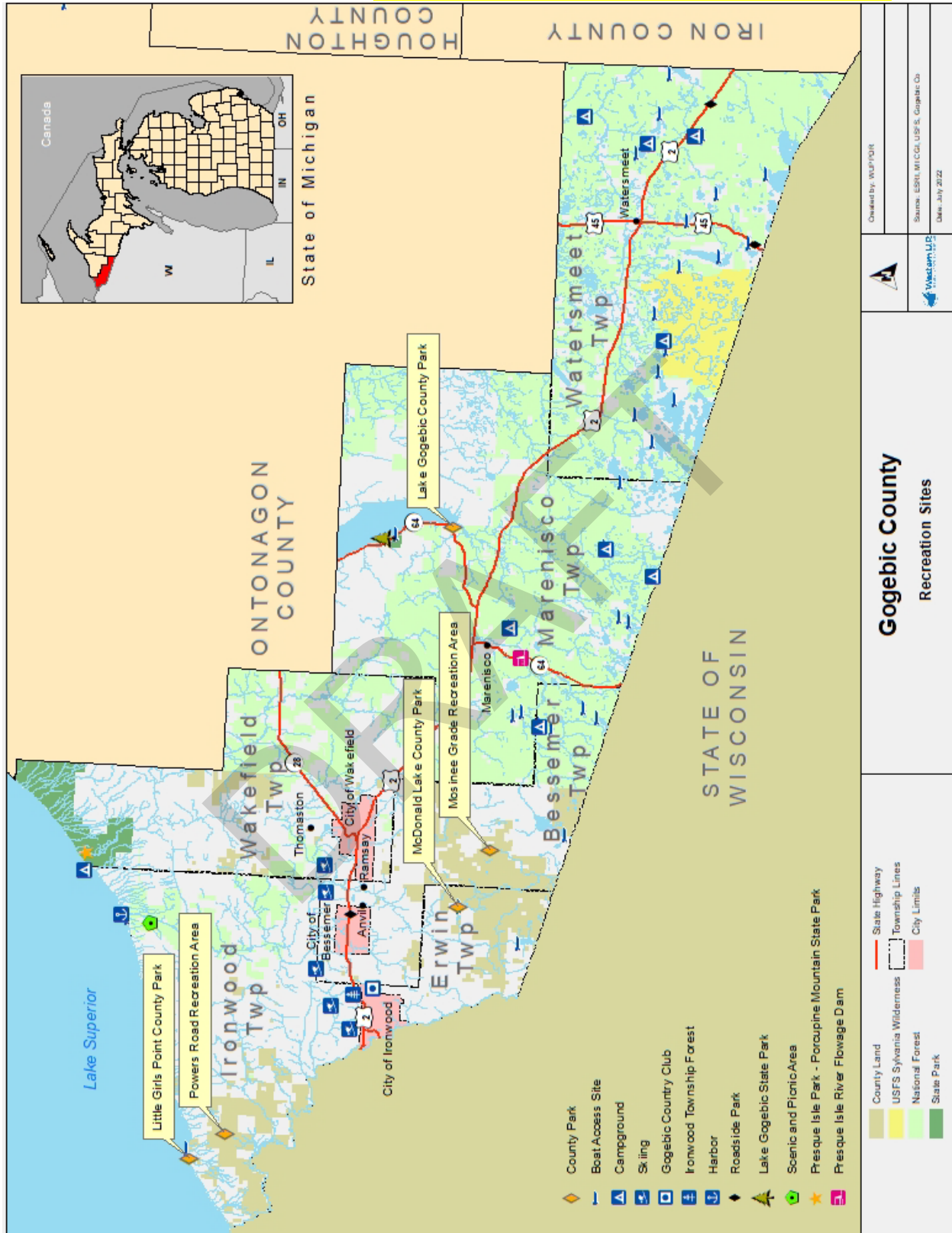
Little Girl's Point is a 271-acre facility with 31 campsites, restrooms, changing rooms, playground equipment, picnic sites, access for swimming and fishing Lake Superior, and an adjacent DNR boat launch (Oman Creek Access Site, which the Commission administers on behalf of DNR). The park is also home to "The Lodge" multi-purpose building (see below). Campground



occupancy was 87 percent during the 2021 season – an increase of more than 30% since 2019 attributable largely to pandemic-associated recreation trends. In 2021, for the first time in at least 10 years, Little Girl's Point's occupancy rate exceeded that of Lake Gogebic County Park.

The park's desirability and diversity of use was increased as a result of a 2011 DNR grant, which funded playground equipment, a day use pavilion, upgraded restrooms, water system improvements, development of additional campsites, and a non-motorized trail system. There are several future projects planned, listed in the Action Plan of this document. **Map 3** is a basic map of the park.

Map 2. Gogebic County Recreation Sites (NOTE: page will be printed 11"X17" in final document)



Map 3. Little Girl's Point County Park



The Lodge

The Lodge at Little Girl's Point is the location of numerous educational, recreational and social activities and programs, such as school outings, family reunions, and picnics. The facility is available for private rental for a fee. The Lodge can sleep up to 40 overnight guests and provides a



large kitchen with two stoves and refrigerators and a dining hall with fireplace. Outside is tent or trailer camping space, a campfire area, and beach access. The Lodge was established in 1951 by the Gogebic County Cooperative Extension.



Lake Gogebic County Park

Lake Gogebic County Park is a 133-acre recreational facility providing access to one of Michigan's largest inland lakes. Recreation facilities include 53 camping sites, a boat launch, swimming beach, restrooms, play field, and playground area. Playground equipment includes a swing, slide, merry-go-round, and horseshoe pits. Approximately half of the campsites are rented



seasonally, a dozen monthly, and the remaining sites weekly or daily. See **Map 4**.



McDonald Lake County Park

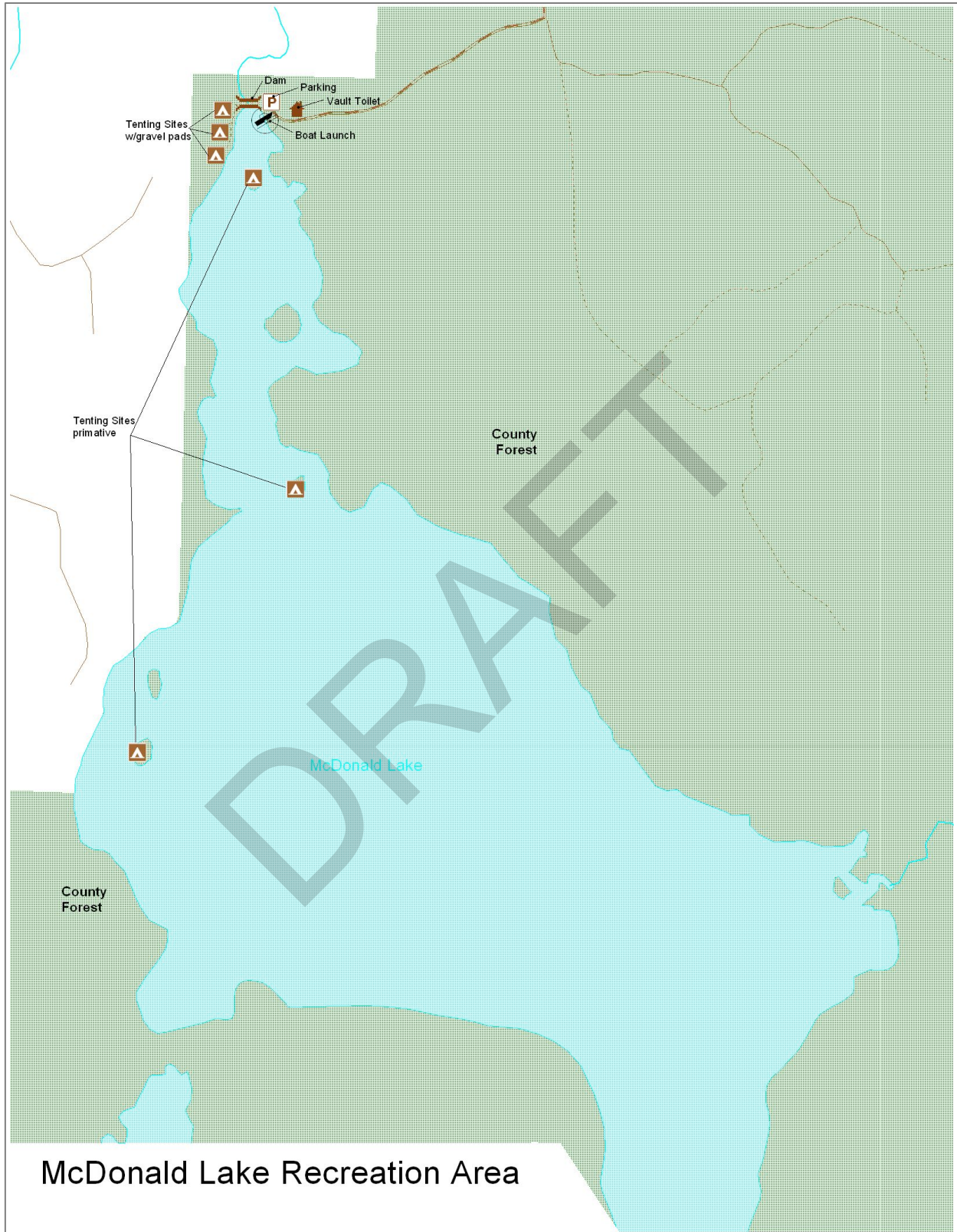
McDonald Lake County Park's campground is rustic, with no hookups and suitable for tents only, making it much different from the other two County-owned parks. The park has six campsites, half of which are located at the northern end of the lake, with the other half located on islands in the lake. Each site has a picnic table. The three sites on the lakeshore have tent pads and fire rings, but the island sites do not. The site has a lake level-control dam and a boat launch with a large parking area and vault toilet. See **Map 5**.



Map 4. Lake Gogebic County Park



Map 5. McDonald Lake County Park



Mosinee Grade Recreation Area

The 1,136-acre Mosinee Grade area is a Grouse Enhanced Management System tract located several miles south of Wakefield. It has been the subject of considerable wildlife (grouse, deer, etc.) habitat work, such as wildlife openings and forage plantings, to improve hunting opportunities. The tract includes a 5.6-mile ruffed grouse hunter walking trail. See **Map 6**.

Powers Road Recreation Area

Located in far northwestern Gogebic County, the Powers Road trail network, approximately 30 miles in total, was developed in cooperation with a local mountain biking group with the intention of connecting to regional trails in nearby parts of the U.P. and Northern Wisconsin. Area trail planning is conducted by the Gogebic Range Trail Authority. The trails allow multiple uses: non-motorized, ATV/ORV, and equestrian. Several miles of trails are developed as hunter walking trails, and in connection with four wildlife openings created since 2015, deer and grouse hunting opportunities are abundant. See **Map 7**.

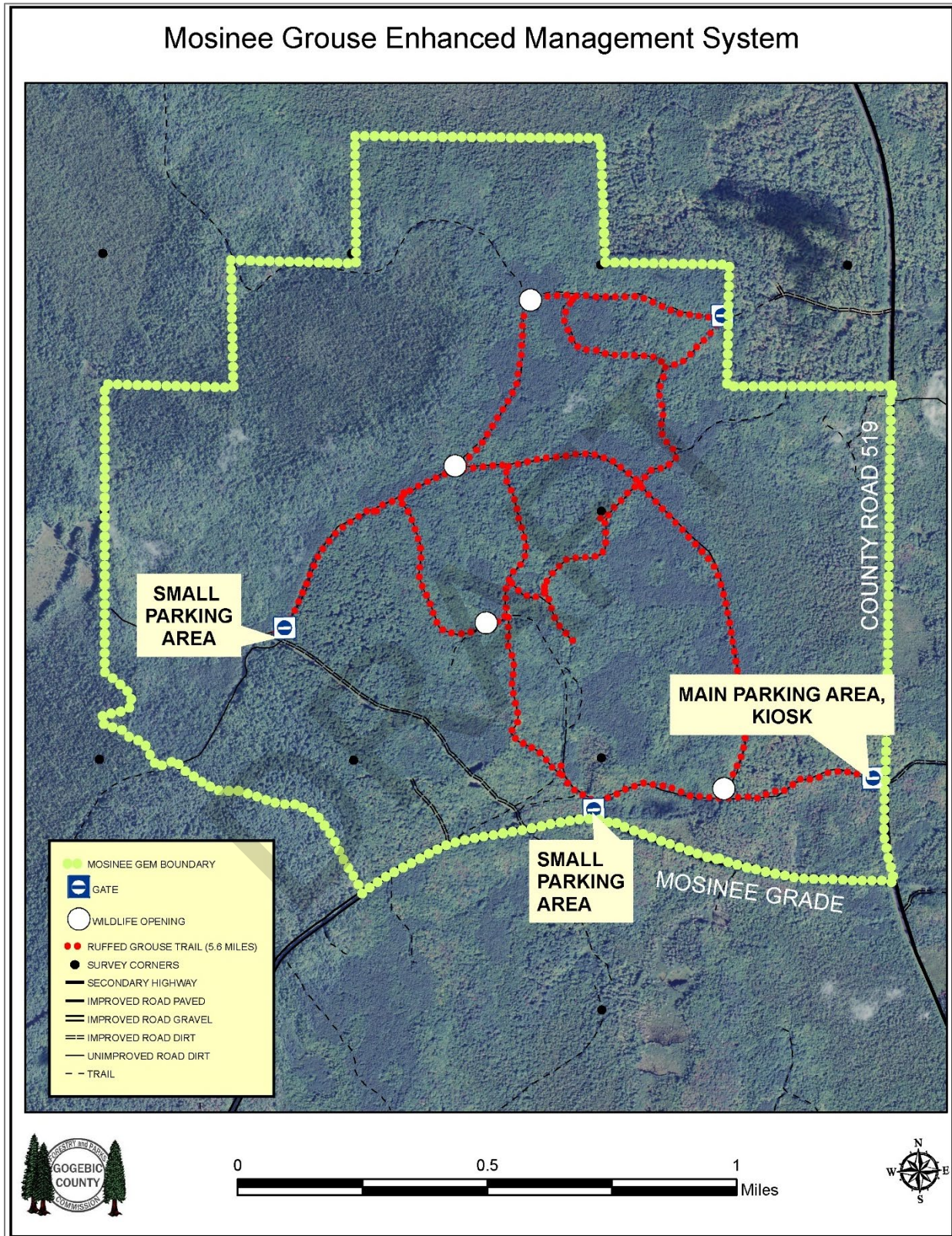
Other Hunter Walking Trails

The County Forest hosts two hunter walking trails not detailed above: Harris Creek and Ketola Grade, each three miles long. They are located roughly south of Wakefield and Bessemer, respectively. Harris Creek is unique in that it allows hunting by ATV for persons with disabilities. It was developed cooperatively with Ottawa National Forest, National Forest Foundation, Ruffed Grouse Society, and DNR. The hunter walking trails are nearly undeveloped, with no amenities other than parking areas. See **maps 8 and 9**.

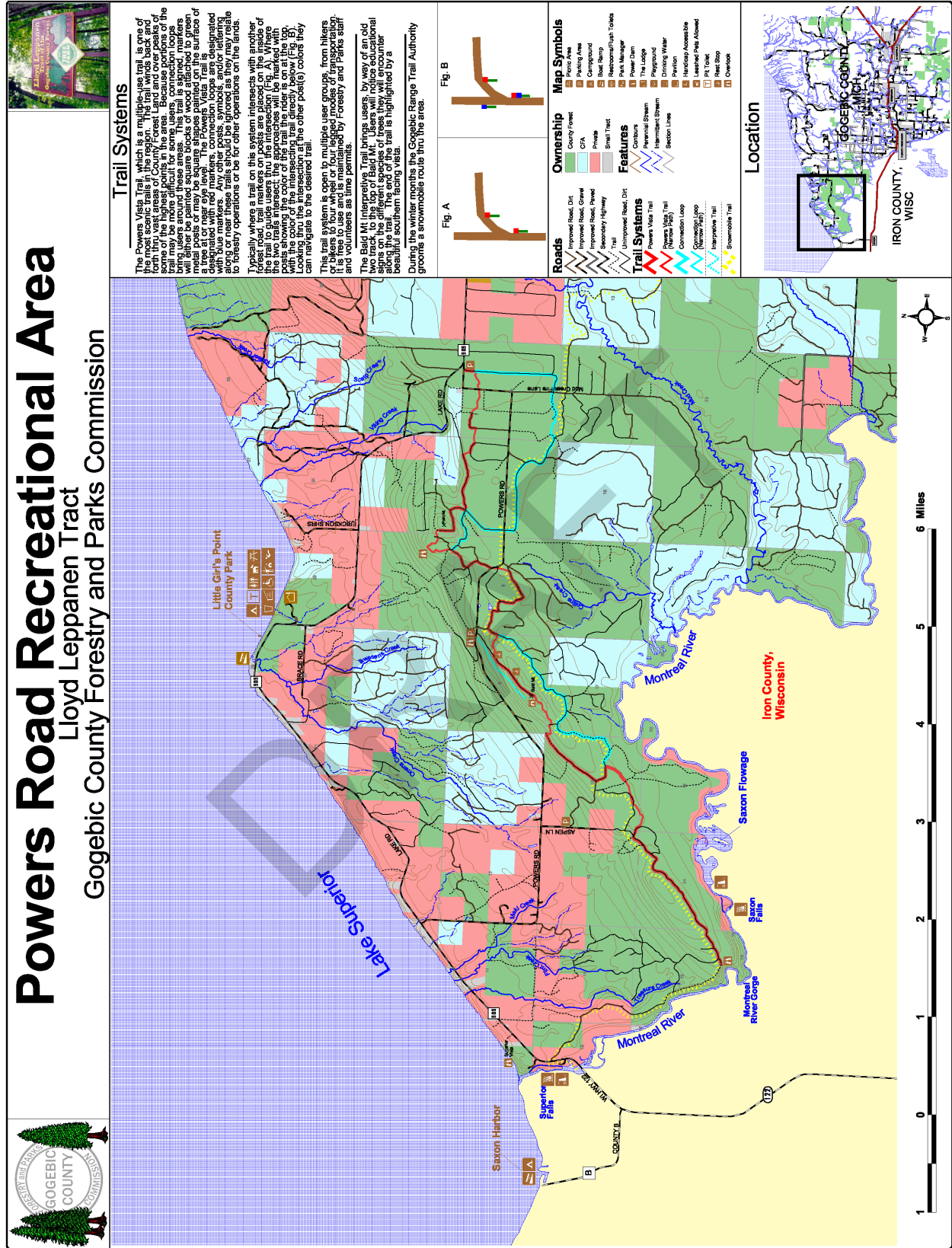
Gogebic County Fairgrounds

In this plan, for the first time, the County-owned fairgrounds is considered a recreation site. The fairgrounds are under jurisdiction of a Fair Board, which has no relationship to the Forestry and Parks Commission. The fairgrounds, approximately 21 acres in total, include a racetrack, grandstand, exhibition building, and several agricultural buildings; however, some essential buildings are in a poor state of repair and will limit future events if not repaired or replaced. The fairgrounds have underutilized space that could be used for new recreation facility development. One possibility is an “equine park” that would establish facilities for equestrian recreation that currently are lacking in Gogebic County and the larger region.

Map 6. Mosinee Grade Recreation Area



Map 7. Powers Road Recreation Area



Powers Road Recreational Area

Lloyd Leppanen Tract
Gogebic County Forestry and Parks Commission



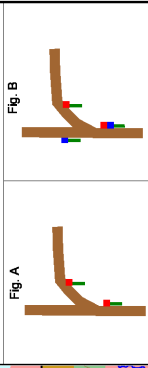
Trail Systems

The Powers Vista Trail, which is a multiple use trail, is one of the most scenic trails in the region. The trail winds back and forth thru vast areas of County, Forest Land and over peaks of hills. The trail is well maintained and offers a variety of trail options for some users. Connection loops bring users around these areas. This trail is signed, markers are placed at intervals and the trail is well marked with metal posts or may be square shapes painted on the surface of a tree at or near eye level. The Powers Vista Trail is designated with blue markers. Any other posts, symbols, and/or lettering along or near these trails should be ignored as they may relate to forestry operations or be for other operations on the lands.

Typically where a trail on the system intersects with another trail, the trail is open to multiple users. From this point on, the trail is free to use and is maintained by Forestry and Parks staff and volunteers as time permits.

The Bald Mt. Interpretive Trail brings users, by way of an old logging road, to the Bald Mt. Interpretive Trail. The trail is a beautiful southern facing vista.

During the winter months the Gogebic Range Trail Authority grounds a snowmobile route into the area.



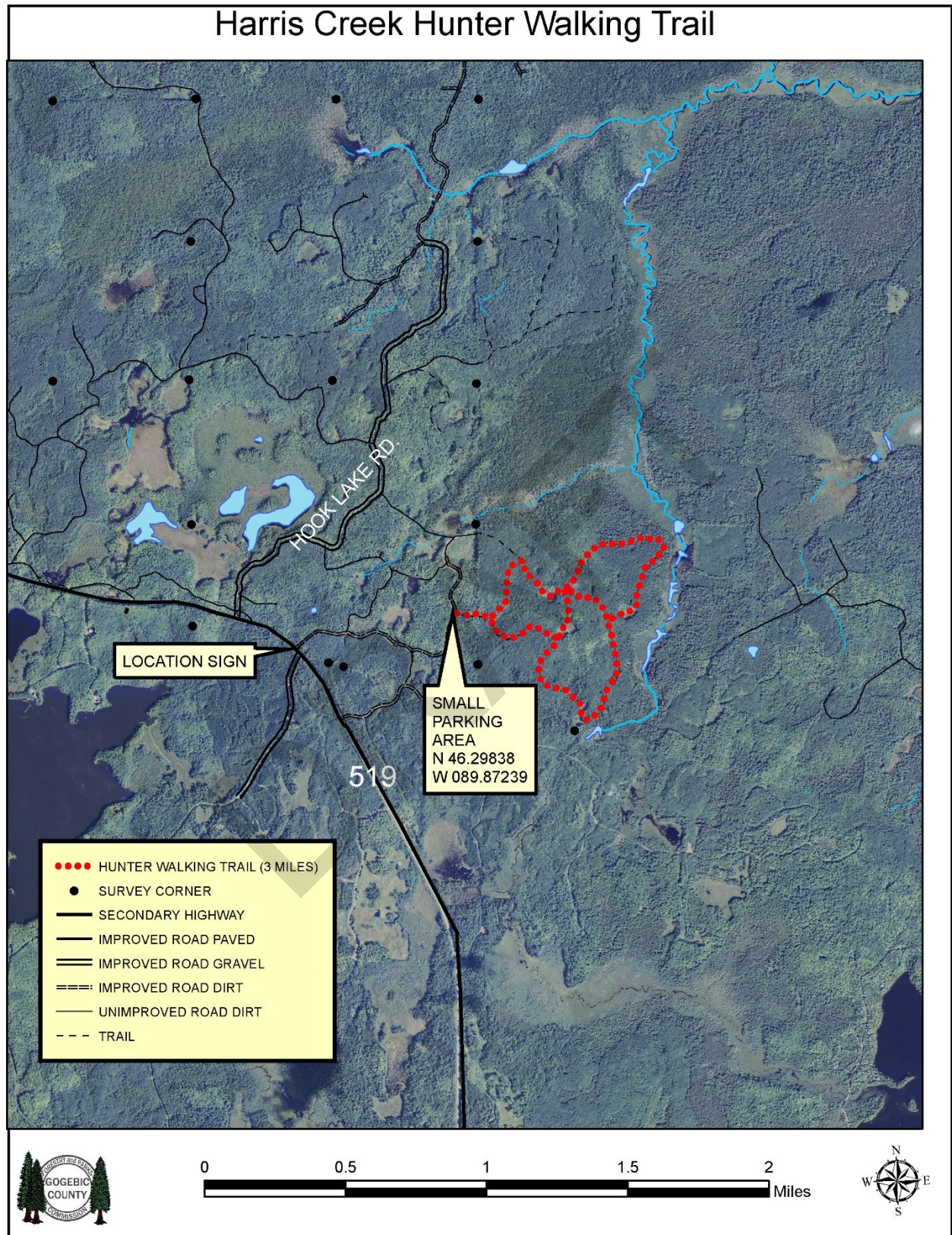
Roads	Ownership	Map Symbols
Improved Road, Dirt	County Forest	Parking Area
Improved Road, Gravel	CFA	Parking Area
Improved Road, Paved	Private	Ball Stop
Secondary Highway	Small Tract	Recreation/Path Tower
Unimproved Road, Dirt	County Forest	Park Manager
	County Forest	The Lodge
	County Forest	Perennial Stream
	County Forest	Intermittent Stream
	County Forest	Season Lines
	County Forest	Power Dam
	County Forest	Drinking Water
	County Forest	Handicap Accessible
	County Forest	Leashed Pets Allowed
	County Forest	Pk. Tower
	County Forest	Rest Stop
	County Forest	Overlook

Trail Systems

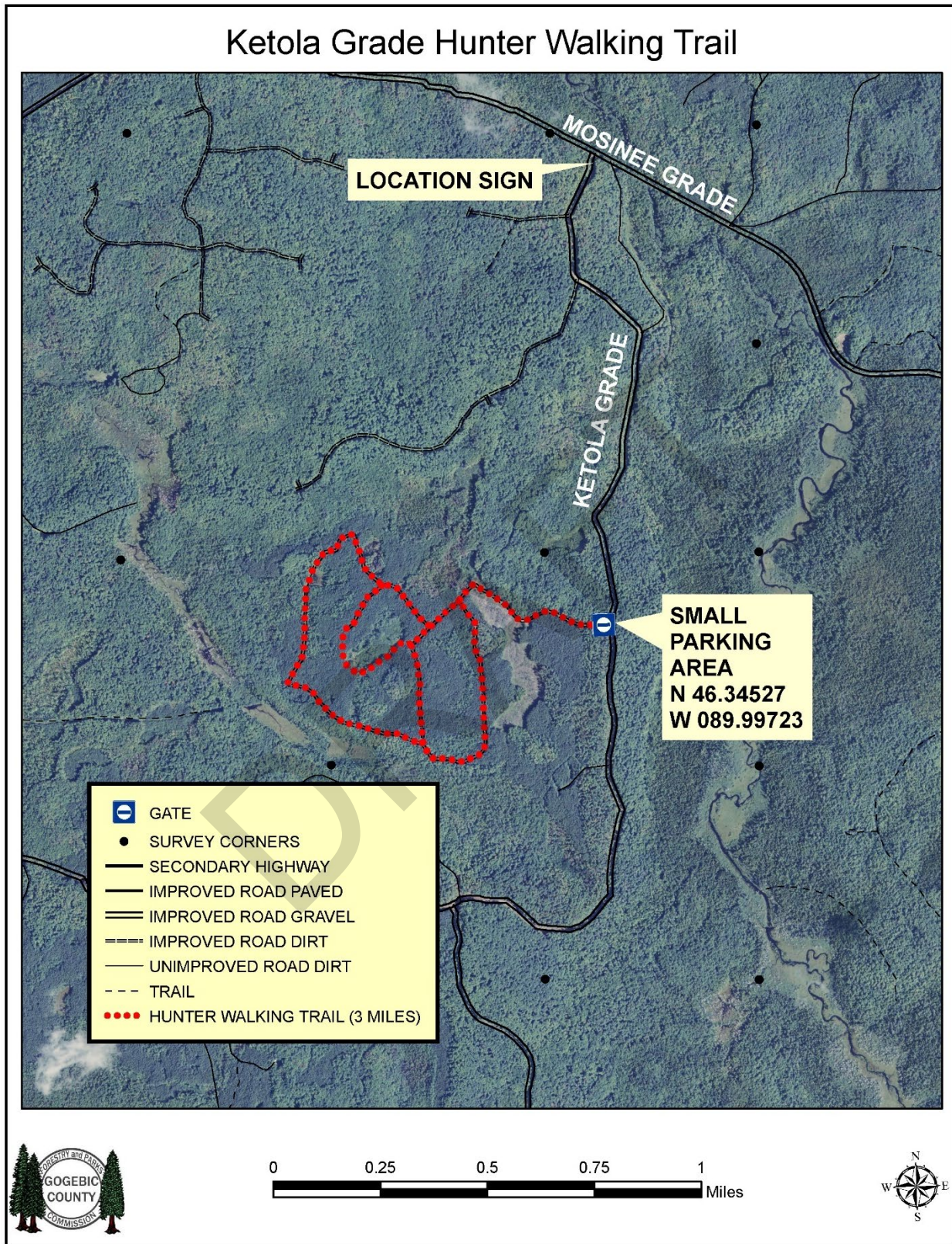
Trail Systems
Powers Vista Trail
Bald Mt. Interpretive Trail
Connection Loop
Connection Loop (Narrow Area)
Interpretive Trail
Snowmobile Trail



Map 8. Harris Creek Hunter Walking Trail



Map 9. Ketola Grade Hunter Walking Trail



Accessibility Assessment

Gogebic County Forestry & Parks Commission evaluated the accessibility of each site under its purview based on knowledge gained during previous projects and maintenance and taking into account ADA National Network checklists.

Accessibility rankings are assigned as follows:

- **Little Girl's Point County Park** 2 – Some site elements meet standards
- **The Lodge** 3 – Most site elements meet standards
- **Lake Gogebic County Park** 2 – Some site elements meet standards
- **McDonald Dam Recreation Area** 2 – Some site elements meet standards
- **Powers Road Recreation Area** 1 – None of the site elements meet standards
- **Hunter Walking Trails** 1 – None of the site elements meet standards
- **Gogebic County Fairgrounds** 2 – Some site elements meet standards

(Evaluated separately since not a Forestry and Parks Commission site)

Gogebic County will address ADA compliance by incorporating accessible elements as it upgrades facilities and undertakes new capital projects. One recent example is the design of the new play area at Lake Gogebic County Park, which incorporated accessible features. Feasible upgrades outside of major new projects include additional accessible campsites and picnic tables. Most restrooms and toilets at county sites are accessible, but increased accessibility for any new restrooms and upgraded buildings are a priority.

Previous DNR Recreation Grants

DNR recreation grants previously received by Gogebic County are as follows:

Lake Superior Park Addition: #26-00178 of 1969, closed, in the amount of \$10,000

- Acquisition of 101 acres of land (complete)

Lake Gogebic Dock Rehabilitation: #TF93-267 of 1993, closed, in the amount of \$86,300

- Mobilization (complete)
- Removal of old dock (complete)
- Dock (steel pile type; *needs rehabilitation or replacement*)
- Miscellaneous (lighting, erosion; remains in good repair)

Lake Superior Park: #BF95-194 of 1995, withdrawn, in the amount of \$34,000

- Well
- Water lines to/from well

Lake Superior Observation Deck: #TF96-118 of 1996, withdrawn, in the amount of \$57,750

- Observation deck
- Beach access
- Paving of parking area
- Toilets

Little Girl's Point Improvements: #TF10-094 of 2010, closed, in the amount of \$235,500

All complete:

- Playground (good condition)
- Pavilion (good condition)
- Restroom improvements (*acceptable but renovation or replacement is planned*)
- Utilities (functional)
- Campsite development (sites in use)
- Trail (acceptable condition)

Ironwood to Bessemer Trail Project: TF14-0166 of 2014, closed, in the amount of \$295,000

All complete and in good condition:

- Bench
- Pedestrian bridge
- Recycle bins
- Signage
- Trail – 8' to 10'-wide
- Trash bins

Bessemer to Ramsay Iron Belle Trail Project: TF18-0184 of 2018, closed, in the amount of \$299,900

All complete and in good condition:

- Bench(es)
- Picnic table(s)
- Recycle and trash bin(s)
- Signage
- Trail 8 feet wide or more

Gogebic County Forest Expansion: TF20-0183 of 2020, open (PA executed), in the amount of \$3,182,200

Acquisition of 4,000 acres of unique forestland within the existing 50,000-acre County Forest to support the community, forest products industry, critical wildlife habitat, and public outdoor recreation

Recreation Inventory: Other Key Sites

Iron Belle Trail and North Country Trail

The Iron Belle Trail Bicycle Route within Gogebic County runs east from the City of Ironwood, roughly following the U.S. Highway 41/M-28 corridor. Phase one of the trail, within Ironwood, was fully implemented by the City. Gogebic County served as pass-through applicant for two Natural Resources Trust Fund grants: In 2014, for phase 2, a 4.2-mile, 10-foot-wide paved pathway between Ironwood and Bessemer; and in 2018, for phase 3,

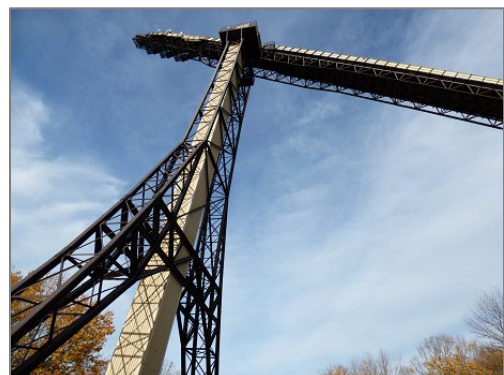


a 3-mile similar pathway from Bessemer to Ramsay. DNR is perpetually responsible for operations and maintenance, either itself or under contract with another entity (currently the Western Gateway Trail Authority). The County may function in a similar grant capacity for a fourth phase from Ramsay to Wakefield; however, this segment is currently held up by landownership issues.

The North Country Trail is the longest in the National Trails System, spanning nearly 5,000 miles from North Dakota to Vermont. Gogebic County includes 55 miles of the trail, which is also designated as the Iron Belle Hiking Route; however, approximately 50% of this length is a road walk rather than a dedicated trail. Gogebic County is working with the Ni-Miikanaake Chapter of the North Country Trail Association to convert portions of the route into a dedicated trail on the County Forest.

Copper Peak Recreation Complex

In Ironwood Township north of the City of Bessemer, the Copper Peak recreation complex contains the largest ski jumping hill in North America along with accessory facilities such as chairlifts, a visitor center, restroom facilities, and parking. The ski jump is 26 stories in height, offering panoramic views of Lake Superior, the Porcupine Mountains, the Apostle Islands, and distances as far away as Minnesota. Copper Peak is one of the



Western U.P.'s top tourist destinations; guests can ride a chairlift from the parking area and visitor center to the structure and then take an elevator ride to the top of the structure. For more active recreation, over 5.5 miles of single-track mountain bike trails have been established within the 300-acre property over the past several years.

Constructed in 1969, the Copper Peak ski jump hosted 10 ski flying events from 1970 until 1994. Since that time, Copper Peak, Inc., the nonprofit corporation that owns the facility, has maintained it and operated it as a tourist attraction in hopes of a return to ski events. In recent years progress toward this goal has accelerated. In spring 2022, after many years of creative pursuit of funding sources, the Michigan Legislature appropriated \$20 million of state infrastructure funds to the facility so that it can be upgraded for FIS events. Events will be year-round with a focus on summer season use. Construction is expected to be finished by the end of summer 2024, with competition beginning in winter 2025.



Ski Resorts

Gogebic County is known for its abundance of recreational and competitive ski complexes and resorts. Two resorts are owned and operated as private businesses, and Mount Zion is owned and operated by Gogebic Community College. Nearby in Ontonagon County is the Porcupine

Mountains Ski Area within the state park. Many of these complexes offer terrain parks and trails in the off-season, and potential exists for development of additional summer activities.

In 2022, Big Snow Resort, itself comprised of the former Blackjack and Indianhead resorts north of Bessemer and Wakefield, were purchased by Minnesota-based Midwest Family Ski Resorts, and they have been renamed and rebranded as Snowriver Mountain Resort. Significant facility upgrades are planned.

Motorized Recreation Trails

A variety of trail enthusiasts have discovered that the county and entire Western Upper Peninsula offer great opportunities for trail development. The most prominent of these has been the snowmobiling community, which has largely defined winter tourism in the area for decades. More recently, all-terrain and off-road vehicle (ATV/ORV) enthusiasts have been brought into the motorized fold, including subsets such as dirt-bikers. Many ATV/ORV trails may permissibly be used as snowmobile trails in the winter season, but the reverse is often not true, as wheeled vehicles that directly contact the ground can be more damaging to trails than snowmobiles.

The Gogebic Range Trail Authority (GRTA), formed by local businesses, snowmobile clubs, all-terrain/off-road vehicle (ATV/ORV) users, cross-country skiers, and mountain biking enthusiasts in response to the growing demand for trail facilities and tourist accommodations, administers a trail system plan within the County. The system connects with existing regional trails and others planned or under development in Wisconsin and the Western Upper Peninsula. Currently the primary function of GRTA is snowmobile trail grooming.

Over the years there have been problems with motorized trail connectivity within the county, particularly along the Ironwood-Wakefield corridor. A serious threat arose in fall 2022 when owners of the new Snowriver Resort announced that access would be closed for Snowmobile Trail 2, the main west-east connector route. After numerous attempts at a compromise or alternative route, GRTA and a large group of other stakeholders identified a new route combining an off-road groomed section near Ramsay with a “semi-groomed” county road segment extending to Wakefield. [This will be updated with any changes in status that occur during the public review period, including DNR approval of the proposed new trail.] Though this crisis has been averted, the temporary nature of easements and changes in private land ownership present an ongoing threat to the motorized trail network.

Nonmotorized Recreation Trails

Concurrent with national trends, non-motorized trail activities have become increasingly popular in recent years. Hiking, biking, and paddling position the region as a four-season tourism

destination rather than focusing on the traditionally predominant winter sports. As snowfalls are expected to become increasingly less severe, or at least less consistent, it will be important to capitalize on potential nonwinter uses of trails that may have traditionally been used as ski trails.

Gogebic County's portion of the Iron Belle bicycle route is one of the most appealing segments in the Upper Peninsula, due in large part to formation of the Western Gateway Trail Authority, which includes officials from four local governments along the route. The county intends to support trail development wherever it has an appropriate role.

In the eastern part of the county, the Wilderness Lakes Trails network is a 37-mile, primarily non-motorized loop connecting Watersmeet with Land O' Lakes, Wisconsin and skirting part of the Sylvania Wilderness. The loop is composed of a combination of low-volume roads, widened road shoulders, and fine gravel paths. It traverses many land ownerships, primarily the Ottawa National Forest. The loop is connected to the Agonikak National Recreation Trail, a gravel-surfaced linear trail from Watersmeet south to the Michigan Roadside Park on US 45 just north of the state border.

Both motorized and non-motorized networks are growing and playing a meaningful role in the economy. Some trails are happily shared by both types of users. Two of the most notable multiple-use trails are a DNR route that extends from Marenisco to the eastern edge of the county and another that spans the east end of the county north-south generally paralleling Highway US 45. The two trails meet slightly north of the community of Watersmeet.

Motorized and non-motorized trails do not always coexist peacefully. Equestrian use can be particularly contentious – sometimes rejected by both motorized and other non-motorized interests – and this limits opportunities in the county. Thus, all parties must continually be engaged to keep an open dialogue to ensure equitable use of all lands and routes.

Longstanding means of recreation, such as campgrounds, water accesses, and athletic venues will remain as important as ever, but trail activities and networks will continue to grow and diversify, contributing to existing lands and facilities to serve diverse user groups.

Planning Process

This Recreation Plan was developed with assistance from the Western Upper Peninsula Planning and Development Region (WUPPDR). Planning was initiated at a meeting of the Gogebic County Forestry and Parks Commission, serving as the Recreation Committee, on June 16, 2022, at which WUPPDR provided an overview of the planning process and the committee gave input on development of a recreation survey.

The survey (**Appendix B**) was finalized in consultation with the Forestry and Parks Director and publicized through a variety of means, including direct contacts to local governments and organizations, a flyer with a QR code to access the survey (**Appendix C**), and a press release which resulted in a newspaper column (**Appendix D**). The survey was made available at the WUPPDR website, publicized on Facebook, and provided in hard copy at the county's public libraries. The survey was open to responses from mid-August until late September. The survey received 251 responses (**Appendix E**), which were taken into account for this plan.

WUPPDR attended a second Forestry and Parks Commission meeting on October 20. Survey results and proposed goals and objectives were reviewed, and general project priorities were agreed upon. Subsequently WUPPDR worked with the Forestry and Parks Director to develop a capital project list for the Action Plan. The draft was then finalized for public review.

The official public review period began on November 28, with the plan available at WUPPDR's website and in print at public libraries and the Forestry and Parks Commission Office. A notice announcing this and the subsequent public hearing was published in the Ironwood Globe newspaper on November 24 (**Appendix E**). The public review period lasted through December 27. [Comments received and revisions made....]

The previously noticed public hearing was held by the Gogebic County Board of Commissioners on December 28 to accept final comment on the plan. [Comments heard and revisions made...] The recreation plan was adopted by the County Board at its regular meeting that immediately followed the public hearing (**Appendix H**).

Goals and Objectives

The overarching goal of the Gogebic County Forestry and Parks Commission is to maintain a variety of both developed and undeveloped sites and opportunities for recreation for both residents and visitors. This can be accomplished through an affordable and achievable capital improvement program that will increase use and user satisfaction at County facilities. Though Gogebic



County's recreation opportunities are offered by a diverse group of local governments and other providers, the County-owned facilities are the focus of this Recreation Plan. Several tiered goals and objectives are below:

Goal 1: Maintain a variety of both developed and undeveloped sites for recreation for both residents and visitors.

- Objective: Implement an affordable and achievable capital improvement program that will increase use and user satisfaction at County-owned facilities through upgrades, major repairs, and new facilities.
 - Rationale: Gogebic County has been successful in implementing its CIP for many years, completing several projects from one recreation plan to the next. Continuing updates will lead to effective project implementation.
- Objective: Equitably allocate funds to projects at sites that are utilized most frequently by residents, such as Little Girl's Point, and to sites that receive large contingents of out-of-area visitors, like the Lake Gogebic County Park campground.
 - Rationale: It is important to both further resident quality of life and to capitalize on opportunities to attract visitors in support of the local economy.
- Objective: Consider the feasibility of future development of County-owned recreation sites on the east end of the county.
 - Rationale: The Commission's sites are concentrated on the west end of the county, but there are some unmet desires among east-end residents for certain facility types.

Goal 2: Respond to and proactively take advantage of changing and unmet user preferences, as well as new recreation trends.

- Objective: Incorporate new and improved hiking and motorized/multi-use trails where appropriate on County-owned sites.
 - Rationale: Trail use has been a growth trend for many years and seems to have increased even more over the past several years, with respondents to this plan's Recreation Survey displaying a great amount of interest. Trails can increase visitation to County-owned sites, thus bringing revenue for additional projects.
- Objective: Respond to recreation activities that have attracted growing interest but have not traditionally been priorities on County-owned sites, such as dark-sky viewing and pickleball.
 - Rationale: The County's recreation program can remain relevant and financially healthy by aiming to do more than maintain the status quo.
- Objective: Better accommodate equestrian recreation through innovative new facilities, addition of amenities to existing sites, and/or land acquisition.
 - Rationale: Gogebic County has a relative undersupply of sites that allow or are specially equipped for equestrian use. The Gogebic County Fairgrounds has existing buildings and adjacent underutilized land that could be developed into a new "equine park" to meet this need.

Goal 3: Build and support a complete, cohesive recreation ecosystem in Gogebic County and the Western U.P. in order to maximize satisfaction for residents and visitors.

- Objective: Consider outside requests for support of recreation initiatives that are not related to County-owned sites, consistent with resident and visitor preferences.
 - Rationale: The County can have a meaningful role in recreation initiatives and assets that are heavily utilized and highly prioritized by county residents, such as the Iron Belle Trail.
- Objective: Keep apprised of any significant changes in landownership and actions by other land management agencies that may impact recreation in the County and provide input as appropriate.
 - Rationale: Providing the County's input can contribute to solutions or help to mitigate negative impacts of these types of changes.

Action Program

The Forestry and Parks Commission's effectiveness at carrying out planned projects to meet these objectives has been established over the course of four previous recreation plans since 2001 – but much work remains to be done. Although major upgrades at Little Girl's Point since 2011 increased user satisfaction, major flooding in 2016 hampered progress and has required additional intensive maintenance and expense. Thankfully, increasing user numbers will help to support upgrades and ongoing repairs.

Of 14 projects identified for county facilities in the 2018-2022 Gogebic County Recreation Plan, six were fully completed or are ongoing. This plan's CIP carries over eight uncompleted projects and two ongoing projects from the previous plan and adds 11 new projects, for a total of 21 projects that may be completed from 2023 to 2027. One of the new projects is improvement of a county road, which would require engagement with and funding from the Gogebic County Road Commission (GCRC). Several small projects are planned in 2023-2024, but larger undertakings such as building improvements and replacements are planned, as resources allow, for 2025-2027. See Table 5 for the Capital Improvements Plan (CIP).

Another potential project, an equine park at and adjacent to the County Fairgrounds, will be considered separately from the CIP since it would entail a major new development and is not related to traditional Forestry and Parks Commission recreation sites.

Capital Improvements

Recreation priorities identified by the Forestry and Parks Commission are based on the current and projected needs of Gogebic County and are addressed in the five-year CIP. Other projects consistent with the goals and objectives will be considered as needs and opportunities arise.

Table 5. Capital Improvements Plan

	Project	Location	Est. Cost	Primary Funding
2023				
1	Improve existing multi-use trails	Powers Road	\$10,000	Local
2	Additional dam maintenance (aesthetic)	McDonald Lake	\$5,000	Local
3	Improved trailhead	Mosinee Grade	\$15,000	Local
4	Continued trail improvements	Mosinee Grade	\$5,000	Local
5	Tent pad improvements	McDonald Lake	\$2,000	Local
6	Lengthen campsites	Lake Gogebic	\$5,000	Local
2024				
1	Major maintenance of buildings	Little Girl's Point	\$20,000	Local
2	Improve beach area	Lake Gogebic	\$5,000	Local
3	Additional hunter walking trails	Powers Road	\$10,000	Local
4	Kayak launch	Lake Gogebic	\$5,000	Local
5	Day use pavilion	Lake Gogebic	\$15,000	Local
2025				
1	Restroom w/flush	Lake Gogebic	\$150,000	DNR
2	Develop ORV connector routes	Mosinee Grade	\$20,000	DNR
3	Additional hunter walking trails	Mosinee Grade	\$5,000	Local
2026				
1	Potable water system	Little Girl's Point	\$500,000	DNR
2	Additional campsites w/electric hookups	Little Girl's Point	\$100,000	DNR
3	Reconstruct boat ramp	McDonald Lake	\$50,000	DNR
2027				
1	Restrooms w/flush toilets (build or renovate)	Little Girl's Point	\$150,000	DNR
2	Major maintenance or replacement of dock	Lake Gogebic	\$500,000	DNR
3	New vault toilet	McDonald Lake	\$150,000	DNR
4	Improve county road leading to site	McDonald Lake	\$500,000	GCRC

Potential Funding Sources

A number of possible sources of public funding for recreation projects within Gogebic County are available, as shown in **Table 6**. Note that for many grant programs, projects that commit more than the minimum local match receive additional points in evaluation/scoring.

Table 6: Potential Funding Sources

Description	Required Match	Source
Local Funds	N/A	County
Community Foundation/Organizations/Businesses	Varies	Local
Michigan Natural Resources Trust Fund	25%	DNR
Land & Water Conservation Fund	50%	DNR
Recreation Passport Grants	25%	DNR
Spark Grants	None	DNR
Boating Infrastructure Grants	25%	DNR
Boating Pumpout Grants	75%	DNR/Michigan Sea Grant
Waterways Program Grants	50%	DNR
Fisheries Habitat Grant Program	10%	DNR
Marine Safety Grants to Counties	25% if state funds; none if federal	DNR
Michigan Invasive Species Grant Program	10%	DNR/EGLE/MDARD
Off Road Vehicle (ORV) Law Enforcement Grants	None	DNR
Off Road Vehicle (ORV) Safety Education Grants	None	DNR
Snowmobile Law Enforcement Grants Program	15%	DNR
Off-Road Vehicle (ORV) Trail Improvement Program	None	DNR
Snowmobile Trail Improvement Program	None	DNR
Wildlife Habitat Grant Program	10%	DNR
Coastal Management Program	50%	EGLE
Bond Falls Mitigation and Enhancement Fund Grants	Varies	UPPCO
Donations, Gifts, and Crowdfunding	Various	Multiple

Appendix

- Appendix A:** Countywide Recreation Inventory
- Appendix B:** Recreation Survey Form
- Appendix C:** Recreation Survey Flyer
- Appendix D:** Recreation Survey Press Release
- Appendix E:** Recreation Survey Results
- Appendix F:** Public Review and Hearing Notice and Affidavit
- Appendix G:** Public Hearing Meeting Minutes
- Appendix H:** County Board of Commissioners Adoption Resolution

DRAFT

DRAFT

Appendix A:

Countywide Recreation Inventory

Gogebic Countywide Recreation Inventory, 2023

LOCATION	SIZE/ ACRE	OWNERSHIP	EXISTING FACILITIES
<i>City of Bessemer</i>			
A.D. Johnson High School Massie Field Complex	7	Bessemer School District	Football field, reg. ball diamond, track, tennis courts (2), gym (2 backboards)
Barber Field	4.6	City of Bessemer	Softball field
Bessemer City Hall	1	City of Bessemer	Gymnasium, stage
Bessemer Housing	4.6	Public – Housing Commission	Playground, basketball court
Bessemer VFW	<1	Private	Horseshoe pits
Bluff Valley Park	10.4	City of Bessemer	Pavilion, picnic area, playground, sand volleyball court, basketball & tennis courts, racetrack for remote controlled cars, ice rink
E.J. Oas Softball Field	5	City of Bessemer	Softball field
Ethnic Commons Park	0.3	City of Bessemer	Picnic tables, gazebos
Iron Belle Trail (part)	1.4 mi	Gogebic County Road Commission	Multi-use paved trail
St. Sebastian Catholic School	<1	Private	Playground
Steiger Little League Field	3	City of Bessemer	Little league baseball field
Washington Elementary School	4	Bessemer School District	Football field, basketball court, gym (2,400 sq. ft. 2 backboards), swimming pool
<i>City of Ironwood</i>			
All Saints Catholic Academy	1	Marquette Roman Catholic Diocese School	Multi-purpose gym
Cemetery Trails	2 mi	City of Ironwood	2 miles snowshoe, hiking, and single track mountain bike trails
Curry Park	9.25	City of Ironwood	Campsites (56; 9 full-hook-up, some electric), playground, picnic tables, grills, toilets, showers, laundry, dump station
Depot Recreation Park and Trailhead	---	City of Ironwood	Playground; pavilion; volleyball courts (2); walking path (0.2 miles); snowmobile, ATV, and non- motorized trail crossings; kiosk; toilet
Downtown Art Park	<1	City of Ironwood	Benches, art displays
Downtown Pocket Park	0.08	City of Ironwood	Garden, walkway, benches

Gogebic County Fairgrounds Oval Track	---	Gogebic County	Used for snowmobile races, etc.
Gogebic Country Club	160	Private	Club house, pro shop, golf course (9 holes)
Hiawatha Park	1.04	City of Ironwood	Playground, pavilion, picnic tables
Hiawatha Rotary Skateboard Park	1.2	City of Ironwood	Skateboard equipment, bicycle pump track
Iron Belle Trail (part)	2.5 mi	MDOT	Multi-use paved trail
Ironwood Welcome Center	10	State, MDOT	Information center, picnic area, restrooms
John Krznarich Little League Field	2.75	City of Ironwood	Baseball field, playground, toilets, concession stand
Kiwanis Tot Lot (Mansfield Street)	---	Nonprofit w/ public use	Playground
Kuitunen Park	0.5	City of Ironwood	Benches
Lake & Ayer Streets Park	<1	City of Ironwood	Playground, benches, basketball
L.L. Wright High School	14	Ironwood Area Schools	Playgrounds (2), gymnasiums (2), football field
Longyear Park	3	City of Ironwood	Playground, basketball court (lighted), walking track, picnic tables, band shell
Miners Memorial Heritage Park	---	City of Ironwood	Biking, hiking, skiing, and snowshoe trails including 4-kilometer groomed cross-country ski loop
Mount Zion Overlook Park	40	City of Ironwood	Benches, toilet, non-motorized trails including 1 mile single track mountain bike trail, frisbee golf
Mountain Man Disc Golf	---	Private	18 disc golf baskets
Municipal Memorial Building	---	City of Ironwood	Gym, auditorium
Newport Heights Historical Park	0.5	City of Ironwood	
Norrie Park	105	City of Ironwood	Playground, pavilion, swimming area, toilets, changing area, picnic tables, (2) tennis courts, horseshoe pits (2), volleyball, paved bike trail, walking paths, swimming area, accessible fishing platform, community gardens, grills
Patterson Tennis Courts	0.77	City of Ironwood	Tennis courts (2), playground
Playground (Sleight School)	2.8	Ironwood Area Schools	Playground (2 backboards), pickup ball diamond, gym (2 backboards)
Randa Field	---	City of Ironwood	Softball field (lights, concession stand)

City of Wakefield			
Gabby Brunelle/Halberg Fields	5	City of Wakefield	Softball fields, pavilion, restrooms
Indian Statue Deck	---	City of Wakefield	Little league baseball diamonds, tennis courts
Robert Burns Little League Field	---	City of Wakefield	Little league baseball diamond, tennis courts
Southwest Park	---	City of Wakefield	Restroom, boat launch, lighted walking trail
Sunday Lake Camper Park	8	City of Wakefield	Campsites (71); water, sewer & electric hook-ups; dump station; restroom/shower; fire rings; and picnic tables
Sunday Lake Eddy Park	42	City of Wakefield	Picnic area, fire rings/grills, tennis courts (2), volleyball court, swimming beach, change house/restrooms, boat launch and ramp, playground equipment, pavilions (2) with electric hook-up and lights, paved and wooded lighted walking trails
Wakefield-Marenisco School District	---	Wakefield-Marenisco Schools	Football field, gym, tennis court, baseball field off-site in Marenisco
Bessemer Township			
Snowriver Mountain Resort	400 total	Private	Downhill skiing, cross country skiing, snowboarding, terrain park (in flux due to new ownership)
Chaney Lake	575*	MI DNR	Boat launch (large), toilets
Eel Lake	---	USFS	Boat launch (small)
Henry Lake	---	USFS	Boat launch (medium)
Iron Belle Trail (part)	2.7 mi	Gogebic County Road Commission	Multi-use paved trail
Memory Lane Roadside Park	---	State, MDOT	Picnic area, restrooms
Moraine Lake	---	USFS	Boat launch (small)
Ramsay Memorial Park	5	Bessemer Township	Playground, picnic tables, grills, keystone bridge, pavilion with kitchen facilities, fishing
Thrush Lake	---	USFS	Boat launch (medium)
Erwin Township			
ABR Ski Trails	---	Private	35 km skate and classic trails
Black River Lake	69	MI DNR	Boat launch (medium), toilets
McDonald Dam Park	380	Gogebic County Forestry and Parks	Boat launch (small), dock, campsites (6), toilets
Ironwood Township			
Airport/Skyway Baseball Field	---	Ironwood Township	Baseball and football fields
Airport Soccer Park	---	Ironwood Township	Pavilion, walking trail, soccer fields

Big Powderhorn Mountain	403	Private	Skiing, sleigh rides, 30 km cross-country skiing, ice rink, terrain park
Black River Harbor Park	254	USFS	Lake Superior boat launch (large), swimming, restrooms, campground (40 sites)
Copper Peak Ski Complex	---	Nonprofit	Ski flying/jumping, chalet, chair-lift rides, mountain bike trails
Curry Park	9	City of Ironwood	Restrooms, laundry, showers, campground (56 sites), dump station, picnic tables, grills, playground
Iron Belle Trail (part)	1.1 mi	Gogebic County Road Commission	Multi-use paved trail
Ironwood Township Community Building	---	Ironwood Township	Indoor gym, baseball field, basketball and tennis courts, playground equipment
Lost Lake Park	---	Ironwood Township	Day use, including picnic and fishing
Mount Zion	150	Gogebic Community College	Alpine skiing, snow tubing, snowboarding, cross country skiing, picnic area
Oman Creek	---	MI DNR	Lake Superior boat launch (large), toilets
Pat O'Donnell Civic Center	---	City of Ironwood	Skating, hockey, multipurpose center
Sunset Road Park	---	Ironwood Township	Playground; baseball, basketball, and tennis courts
Wolverine Ski Hill	---	Private	Ski jumping, cross-country skiing, mountain biking
<i>Marenisco Township</i>			
Bobcat Lake Campground	---	USFS	Boat launch (small), swimming, campground (12 sites), toilets
Community Center	---	Marenisco Township	
Dawn Lake	---	USFS	Boat launch (carry-down)
Don McKenzie Memorial Park	5	Marenisco Township	Tennis court, ice rink, skateboard area
Elbow Lake	---	USFS	Boat launch (medium)
Gaylord Lake	---	Private	Public access via private landing
Henry Lake Campground	20	USFS	Boat launch, toilets, campground (11 sites)
Kimberly Field	---	Nonprofit	Softball Field, Playground
Lake Gogebic (East)	---	MI DNR	Boat launch (large)
Lake Gogebic State Park	361	MI DNR	Restrooms, picnicking, hiking, playground, boat launch (large), cross-country skiing, camping (165

			sites), swimming, fishing
Little Oxbow Lake	---	USFS	Boat launch (small to medium)
MI-TRALE DNR Designated Multi-Use Route	14 mi	MI DNR	Multi-use trail runs generally eastward from the community of Marenisco
Moosehead Lake Campground	---	USFS	Boat launch (medium), toilets, campground (13 sites)
Ormes Lake	---	USFS	Boat launch (medium)
Pomeroy Lake Campground	40	USFS	Boat launch (medium), toilets, campground (13 sites)
Presque Isle River Flowage Dam	---	State, MDOT	Roadside park, picnic area, boat launch (medium), toilets
Redboat Lake	---	USFS	Boat launch (medium)
Shooting Range	---	Marenisco Township	Firearm, archery activities
Wakefield Township			
Delmar's Campground	---	Private	Playground, recreation bldg., swimming, boat launch, fishing, campground (25 sites)
Snowriver Mountain Resort	400 total	Private	Downhill skiing, cross country skiing, snowboarding, terrain park (in flux due to new ownership)
Porcupine Mt. State Park-Presque Isle River	10,560	MI DNR	Backpacking, picnicking, hunting, restrooms, admin bldg., fishing, cross country skiing, campground (88 sites) on Lake Superior
Watersmeet Township			
Allen Lake	---	MI DNR	Boat launch (medium)
Bass Lake	---	Watersmeet Township	Boat launch
Beatons Lake (North)	---	USFS	Boat launch (small to medium)
Beatons Lake (South)	---	USFS	Boat launch (carry-down)
Burned Dam Campground	40	USFS	Campground (6 sites), Mex-i-mine Falls trail, fishing, toilet
Cisco Lake	506	MI DNR	Boat launch (large), toilets, accessible
Clearwater Lake	---	MI DNR	Boat launch (medium), toilets
Dinner Lake	110	MI DNR	Boat launch (medium), toilets
Duck Lake	616	MI DNR	Boat launch (large), toilets
Grass Lake	---	USFS	Boat launch (carry-down)
Imp Lake Campground	20	USFS	Boat launch, fishing, swimming, toilets, campground (22 sites), one-mile accessible trail
Lac Vieux Desert	4,260	DNR Waterways Division	Boat launch (medium to large) and toilets
Lac Vieux Desert Tribal Facility	---	Lax Vieux Desert	Indoor recreation and community

		Band	center, multi-use event track
Northern Waters Resort	---	Lac Vieux Desert Band	Casino, 18-hole golf course
Little Duck Lake	---	MI DNR	Boat launch (small to medium)
Marion Lake	---	USFS	Boat launch, fishing, day use, toilets, campground (39 sites), swimming
Middle Branch, Ontonagon River	40	MI DNR	Small boat and canoe launch, fishing
MI-TRALE DNR Designated Multi-Use Routes	41 mi	MI DNR	Two multi-use trails intersecting slightly north of Watersmeet near Highway US 45
Moon Lake	---	MI DNR	Boat launch (large)
Robert Rigotti Roadside Park	---	State, MDOT	Picnic area, restrooms
Roy Greeman Roadside Park	---	State, MDOT	Picnic area, restrooms
Taylor Lake	---	USFS	Boat launch (small to medium), toilets
Thousand Island Lake	1,079	MI DNR	Boat launch (large), toilets
Township Ball Field	---	Watersmeet Township	Diamond, dugout, bleachers
Sylvania Visitor's Center	---	USFS	Paved interpretive trail, information center, restrooms
Sylvania Wilderness & Recreation Area	18,327	USFS	Boat launches, fishing, day use, toilets, campground (40 sites), backcountry campsites, 26 miles non-motorized trails
Watersmeet Township School District	2	Watersmeet Township	Playground, ball diamond, gym (6 backboards), weight and fitness center
Wilderness Lakes Trail	13 mi	Various; primarily USFS	Multi-use trail from Watersmeet, MI to Land O'Lakes, WI
Wolf Mountain	---	USFS	Trail, overlook

DRAFT

Appendix B:

Recreation Survey Form

Gogebic County Recreation Survey 2022

The Gogebic County Recreation Committee is seeking public input to help plan improvements to County recreation sites over the next five years. The survey can also be completed online (**preferred method**) at: <https://www.surveymonkey.com/r/GogebicCountyRec> or the QR code at right.



If you choose to complete this paper version, return it by **September 18** to the location where you obtained it or to: **WUPPDR, 400 Quincy St 8th Floor, Hancock, MI 49930.**

1. Please indicate your residency status (check **one**):
 - I am a full-time resident of Gogebic County
 - I am a seasonal resident of Gogebic County (less than six months/year)
 - I am not a resident, but I visit Gogebic County (if so, skip to question #3)
 - None of the above

2. If you are a resident of Gogebic County, where is your residence (check **one**)?
 - City of Bessemer
 - Bessemer Township
 - Marenisco Township
 - City of Ironwood
 - Erwin Township
 - Wakefield Township
 - City of Wakefield
 - Ironwood Township
 - Watersmeet Township

3. How many persons in your household falls into each of the following age groups:
___ 0-5 years ___ 6-12 years ___ 13-19 years ___ 20-39 years ___ 40-64 years ___ 65+ years

4. Does anyone in your household (including you) have a disability or require specialized recreation? Specialized recreation refers to accommodations or modifications made to recreation facilities and equipment in order to remove barriers that prevent handicapped persons from using the facilities or equipment.
 - Yes
 - No (if not, skip to question #6)

5. Please explain your household's need for specialized recreation, and list any specific recreation sites or facilities in the county where household members have experienced mobility difficulties:

6. Does anyone in your household use or take part in any of the following? (Check **ALL** that apply).
 - Archery
 - Fishing – boat/canoe/kayak
 - Skiing – cross-country
 - ATV/ORV trails
 - Fishing – ice
 - Skiing – downhill
 - Backpacking
 - Fishing – shore or wading
 - Skijoring
 - Baseball fields
 - Golf
 - Sledding
 - Basketball courts
 - Hiking
 - Snowboarding
 - Bean bag toss
 - Hockey
 - Snowmobiling
 - Bicycling (electric – e-bike)
 - Horseshoes
 - Snowshoeing
 - Bicycling (mountain)
 - Hunting
 - Soccer
 - Bicycling (path/road)
 - Ice skating
 - Softball fields
 - Boating/canoeing/kayaking
 - Pickleball
 - Swimming
 - Campgrounds – RV hookups
 - Picnicking
 - Tennis
 - Campgrounds – no hookups
 - Playgrounds
 - Volleyball
 - Camping on dispersed sites
 - Running/jogging
 - Dark sky viewing
 - Shooting
 - Other; please specify: _____

The following questions refer to county-owned recreation sites. These are indicated by diamonds on the map:



The following are park improvement projects that may be undertaken by the County in the next five years. Please indicate each potential project's level of importance (to you) using the scale provided where 1 is LEAST IMPORTANT and 5 is MOST IMPORTANT. Leave blank if you have no opinion.

LAKE GOGEBIC COUNTY PARK
(Off Highway M-64 at southern tip of lake)

	<i>Importance</i>				
	Least	←	→		Most
Perform major maintenance or replacement of dock	1	2	3	4	5
Construct new restrooms with flush toilets	1	2	3	4	5
Lengthen campsites (to accommodate larger units)	1	2	3	4	5
Improve beach area	1	2	3	4	5
Construct day use pavilion(s) near beach	1	2	3	4	5
Construct kayak launch	1	2	3	4	5
Other: _____	1	2	3	4	5

LITTLE GIRL'S POINT COUNTY PARK
(On Lake Superior in Ironwood Township)

	<i>Importance</i>				
	Least	←	→		Most
Construct new restrooms with flush toilets	1	2	3	4	5
Install potable drinking water system	1	2	3	4	5
Create additional campsites including electricity	1	2	3	4	5

Perform major maintenance on buildings 1 2 3 4 5
 Other: _____ 1 2 3 4 5

McDONALD LAKE COUNTY PARK
(Erwin Township south of Bessemer)

Least ← *Importance* → Most

Improve tent pads 1 2 3 4 5
 Construct new vault toilet 1 2 3 4 5
 Improve/perform major maintenance on dam 1 2 3 4 5
 Reconstruct boat ramp 1 2 3 4 5
 Improve county road that leads to recreation area
 (not within the county government's direct control) 1 2 3 4 5
 Other: _____ 1 2 3 4 5

POWERS ROAD RECREATION AREA
(Trails throughout western tip of county)

Least ← *Importance* → Most

Continue to improve existing multi-use trails 1 2 3 4 5
 Develop additional hunter walking trails 1 2 3 4 5
 Other: _____ 1 2 3 4 5

MOSINEE GRADE RECREATION AREA
(Off CR 519 south of Wakefield)

Least ← *Importance* → Most

Develop improved trailhead 1 2 3 4 5
 Continue to improve existing hunter walking trails 1 2 3 4 5
 Develop additional hunter walking trails 1 2 3 4 5
 Develop connector routes for ORVs 1 2 3 4 5
 Other: _____ 1 2 3 4 5

7. Within the last year, approximately how many days did you or someone from your household use each of the facilities?

	0	1 to 5	6 to 20	Over 20
Lake Gogebic County Park	○	○	○	○
Little Girl's Point County Park	○	○	○	○
McDonald Lake County Park	○	○	○	○

	0	1 to 5	6 to 20	Over 20
Powers Road Recreation Area	<input type="radio"/>	<input type="radio"/>	<input type="radio"/>	<input type="radio"/>
Mosinee Grade Recreation Area	<input type="radio"/>	<input type="radio"/>	<input type="radio"/>	<input type="radio"/>
Iron Belle Trail (Ironwood-Ramsay)	<input type="radio"/>	<input type="radio"/>	<input type="radio"/>	<input type="radio"/>

8. Do you have any ideas for ways the County can partner with other entities (e.g. DNR, Ottawa National Forest, local organizations) to improve and expand recreation opportunities? Please explain:

9. Are there any other (non-county-owned) existing recreation sites or facilities in the county that you think should be improved, expanded, or changed in some way? Please describe:

10. Please use the space below to list additional recreation projects you would like to see in Gogebic County, or provide comments/suggestions you think will be helpful for the Gogebic County Recreation Committee:

Thank you! Your input is important to help identify and prioritize recreation projects throughout the county.

Survey results will be included in the draft 2023-2027 Gogebic County Recreation Plan, which will be available for public review in late 2022 or early 2023. Notice of the draft's availability will be publicized at the appropriate time. If you would like to be notified via e-mail of the draft plan's availability, please leave your name (optional) and e-mail address below.

Name: _____

E-mail: _____

DRAFT

Appendix C:

Recreation Survey Flyer

Contribute your feedback!

Gogebic County Recreation Survey 2022

Gogebic County is updating its five-year recreation plan. The plan will guide development of county recreation sites and other priorities. Your input is vital!

Complete the survey by September 18
using this QR code:



or here:

<https://www.surveymonkey.com/r/GogebicCountyRec>

Questions may be directed to:

Jerry Wuorenmaa, WUPPDR, (906) 482-7205 ext. 111 or jwuorenmaa@wupldr.org

DRAFT

Appendix D:

Recreation Survey Press Release and Column



Western U.P.

PLANNING & DEVELOPMENT REGION

400 Quincy St, 8th Floor, Hancock, Michigan 49930
906-482-7205 Fax: 906-482-9032 e-mail: info@wupdr.org

News Release

HOLD FOR RELEASE UNTIL 8/19/2022

Media Contact:

Jerry Wuorenmaa, Executive Director

906.482.7205 ext. 111

jwuorenmaa@wupdr.org

August 16, 2022

Recreation Survey Available for Gogebic County

Gogebic County is working with the Western Upper Peninsula Planning and Development Region (WUPPDR) to update its five-year recreation plan. In addition to guiding improvements to the county's recreation facilities and sites, the plan will ensure the county is eligible for certain grants from the Michigan Department of Natural Resources (DNR).

Members of the public can have a voice in the planning effort by responding to a short survey.

Online responses are preferred and can be provided at

<https://www.surveymonkey.com/r/GogebicCountyRec>.

Alternatively, a paper copy can be obtained at the Bessemer, Ironwood, Wakefield, or Marenisco public libraries; Watersmeet Township office; or by contacting WUPPDR at (906) 482-7205 ext. 111 or jwuorenmaa@wupdr.org. This phone number and e-mail address may also be used to contact Jerry Wuorenmaa, Executive Director, for more information.

The survey will be open to responses through at least September 18, 2022.

###

Briefs

Picnic planned at Little Finland on Sunday

KIMBALL, Wis. — Little Finland will host a potluck membership picnic on Sunday at noon. Bingo will be played after the meal. The area Paisno Club members have been invited to join the festivities. For more information, call 906-932-1608.

On Monday, Little Finland's ongoing Finnish class will continue at 2 p.m. with instructor Seija Jarvenpaa.

Gogebic County floats recreation survey

HANCOCK — Gogebic County is working with the Western Upper Peninsula Planning and Development Region to update its five-year recreation plan.

In addition to guiding improvements to the county's recreation facilities and sites, the plan will ensure the county is eligible for certain grants from the Michigan Department of Natural Resources, according to a release from WUPPDR Executive Director Jerry Wuorenmaa.

"Members of the public can have a voice in the planning effort by responding to a short survey," he said.

Online responses are preferred and can be provided at [surveymonkey.com/r/GogebicCountyRec](https://www.surveymonkey.com/r/GogebicCountyRec).

Alternatively, a paper copy can be obtained at the Bessemer, Ironwood, Wakefield or Marenisco public libraries; Watersmeet Township office; or by contacting WUPPDR at 906-482-7205 ext. 111 or jwuorenmaa@wuppdr.org. This phone number and e-mail address may also be used to contact Wuorenmaa, for more information.

The survey will be open to responses through at least Sept. 18, according to Wuorenmaa.

'AGT' has viewers, as well

NEW YORK (AP) — As is often the case in summer, NBC's 'America's Got Talent' was the week's most popular prime-time television show for the week Aug. 8-14. Its Tuesday night show last week topped the ratings, and its Wednesday night version finished third.

CBS' "60 Minutes" landed at second place for the week.

Otherwise, the list includes mostly game shows and Fox News' prime-time opinion show lineup. The revival of "Password" was a winner in NBC's lineup.

The one thing missing among the top shows this past week was scripted programming: Only a rerun of "FBI" on CBS made it onto the top 20 list.

For the week of Aug. 8-14, the top

20 prime-time shows, their networks and viewerships include:

1. "America's Got Talent" (Tuesday), NBC, 6.45 million.
2. "60 Minutes," CBS, 5.95 million.
3. "America's Got Talent" (Wednesday), NBC, 5.5 million.
4. "Password" (Wednesday), NBC, 4.58 million.
5. "Celebrity Family Feud," ABC, 4.51 million.
6. "Tucker Carlson Tonight" (Monday), Fox News, 4.26 million.
7. "Hannity" (Monday), Fox News, 4.24 million.
8. "Password" (Tuesday), NBC, 4.21 million.
9. "The \$100,000 Pyramid," ABC, 4.01 million.
10. "Big Brother" (Sunday), CBS,

3.95 million.

11. "Big Brother" (Wednesday), CBS, 3.86 million.
12. "America's Funniest Home Videos," ABC, 3.81 million.
13. "The Ingraham Angle" (Monday), Fox News, 3.7 million.
14. "Big Brother" (Thursday), CBS, 3.63 million.
15. "FBI," CBS, 3.57 million.
16. "The Rachel Maddow Show" (Monday), MSNBC, 3.523 million.
17. "Tucker Carlson Tonight" (Tuesday), Fox News, 3.518 million.
18. "Press Your Luck," ABC, 3.5 million.
19. "Hannity" (Tuesday), Fox News, 3.4 million.
20. "Tucker Carlson Tonight" (Wednesday), 3.36 million.

Review: 'Slenderman' chronicles a harrowing childhood crime

By MAE ANDERSON
Associated Press

"An intimate, plain-spoken masterpiece." —Walter Kirn

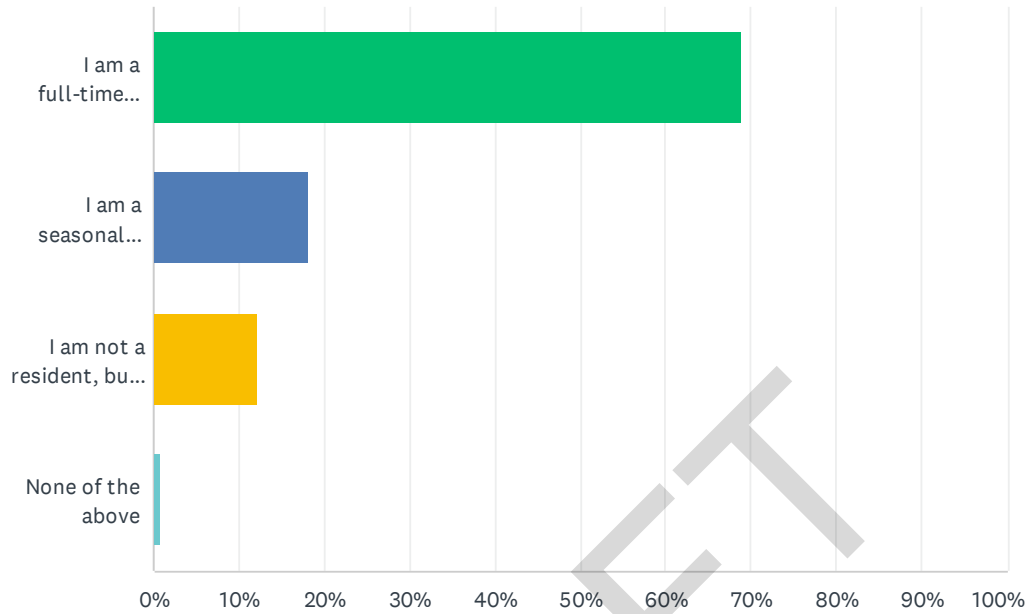
them. They chose their friend, Bella, for the attack.

DRAFT

Appendix E:
Recreation Survey Results

Q1 Please indicate your residency status

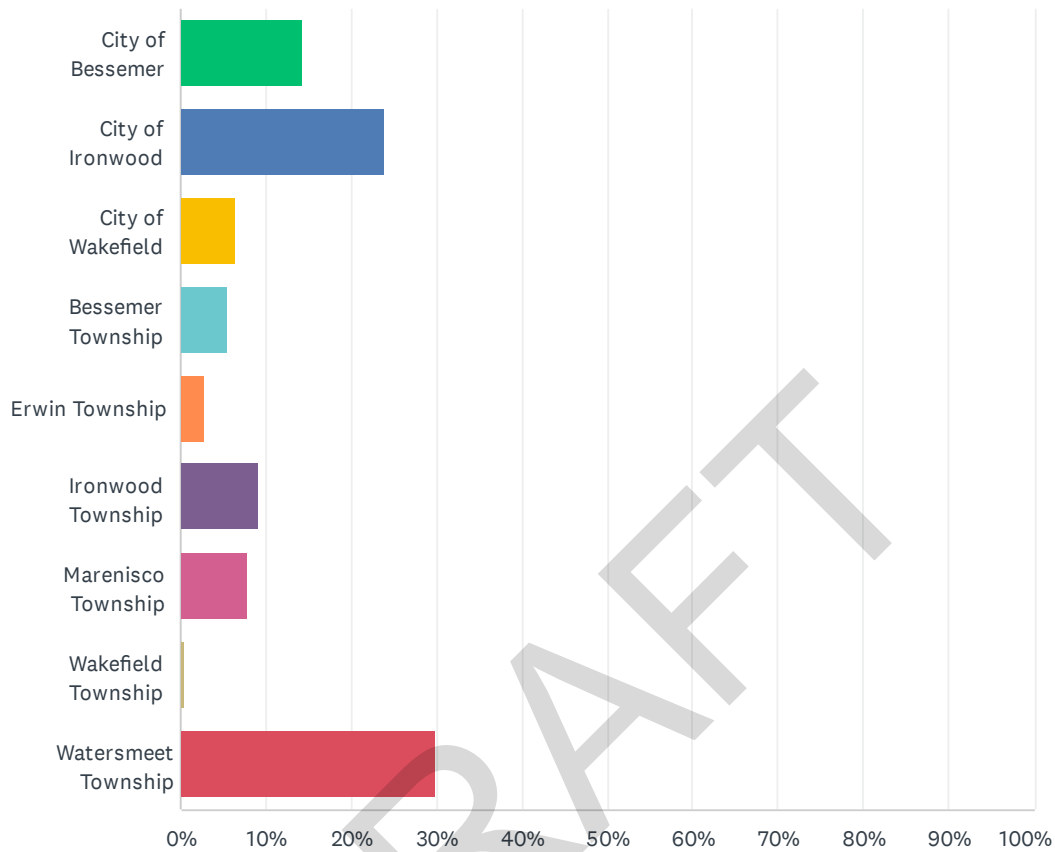
Answered: 247 Skipped: 4



ANSWER CHOICES	RESPONSES	
I am a full-time resident of Gogebic County	68.83%	170
I am a seasonal resident of Gogebic County (less than six months/year)	18.22%	45
I am not a resident, but I visit Gogebic County	12.15%	30
None of the above	0.81%	2
TOTAL		247

Q2 Where is your primary residence in Gogebic County located?

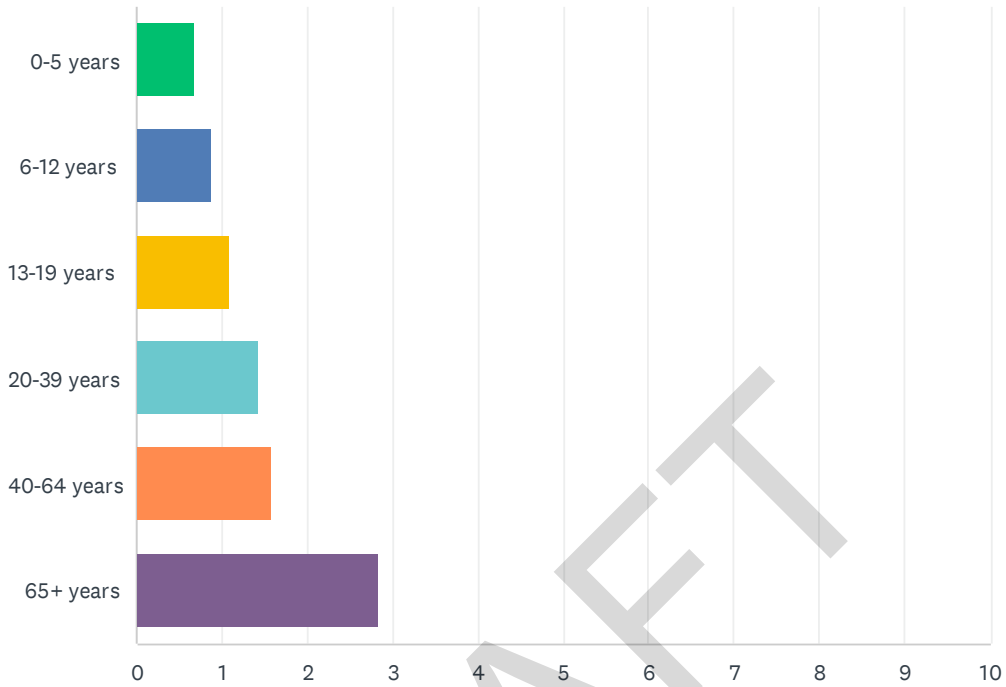
Answered: 218 Skipped: 33



ANSWER CHOICES	RESPONSES	
City of Bessemer	14.22%	31
City of Ironwood	23.85%	52
City of Wakefield	6.42%	14
Bessemer Township	5.50%	12
Erwin Township	2.75%	6
Ironwood Township	9.17%	20
Marenisco Township	7.80%	17
Wakefield Township	0.46%	1
Watersmeet Township	29.82%	65
TOTAL		218

Q3 How many persons in your household are in the following age groups?

Answered: 247 Skipped: 4

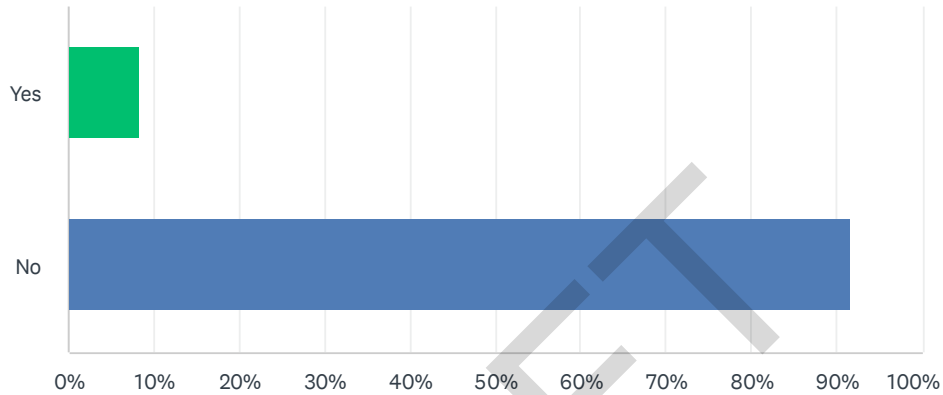


ANSWER CHOICES	AVERAGE NUMBER	TOTAL NUMBER	RESPONSES
0-5 years	1	31	45
6-12 years	1	54	62
13-19 years	1	68	63
20-39 years	1	139	97
40-64 years	2	246	155
65+ years	3	310	109
Total Respondents: 247			

#	0-5 YEARS	DATE
1	0	9/18/2022 3:16 AM
2	0	9/15/2022 11:40 AM
3	2	9/9/2022 12:41 PM
4	4	8/31/2022 4:54 PM
5	0	8/31/2022 3:45 PM
6	0	8/31/2022 3:00 PM
7	0	8/30/2022 7:56 PM
8	0	8/30/2022 7:11 PM

Q4 Does anyone in your household (including you) have a disability or require specialized recreation? Specialized recreation refers to accommodations or modifications made to recreation facilities and equipment in order to remove barriers that prevent handicapped persons from using the facilities or equipment.

Answered: 250 Skipped: 1



ANSWER CHOICES	RESPONSES
Yes	8.40% 21
No	91.60% 229
TOTAL	250

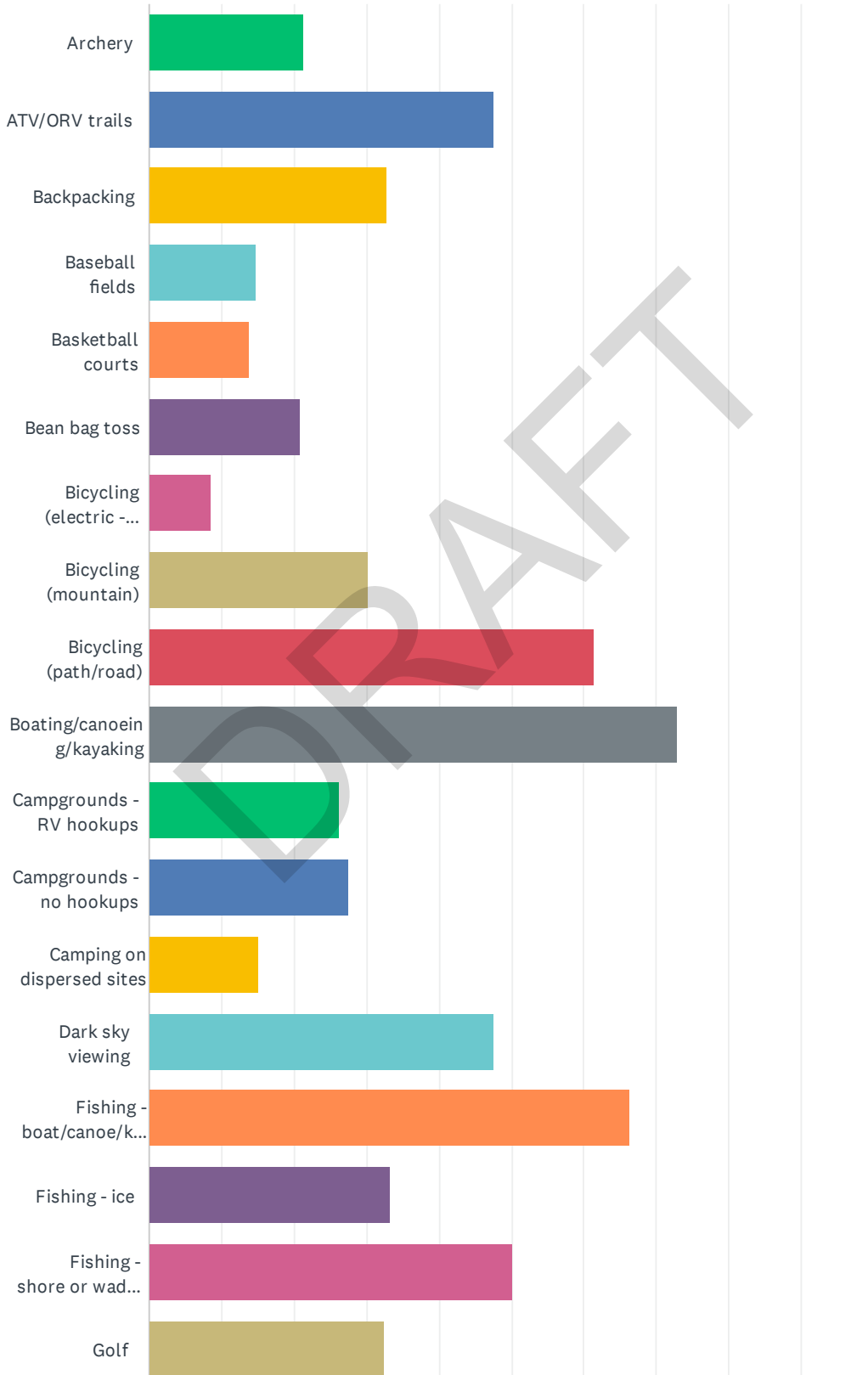
Q5 Please explain your household's needs for specialized recreation, and list any specific recreation sites or facilities in the county where household members have experienced mobility difficulties:

Answered: 17 Skipped: 234

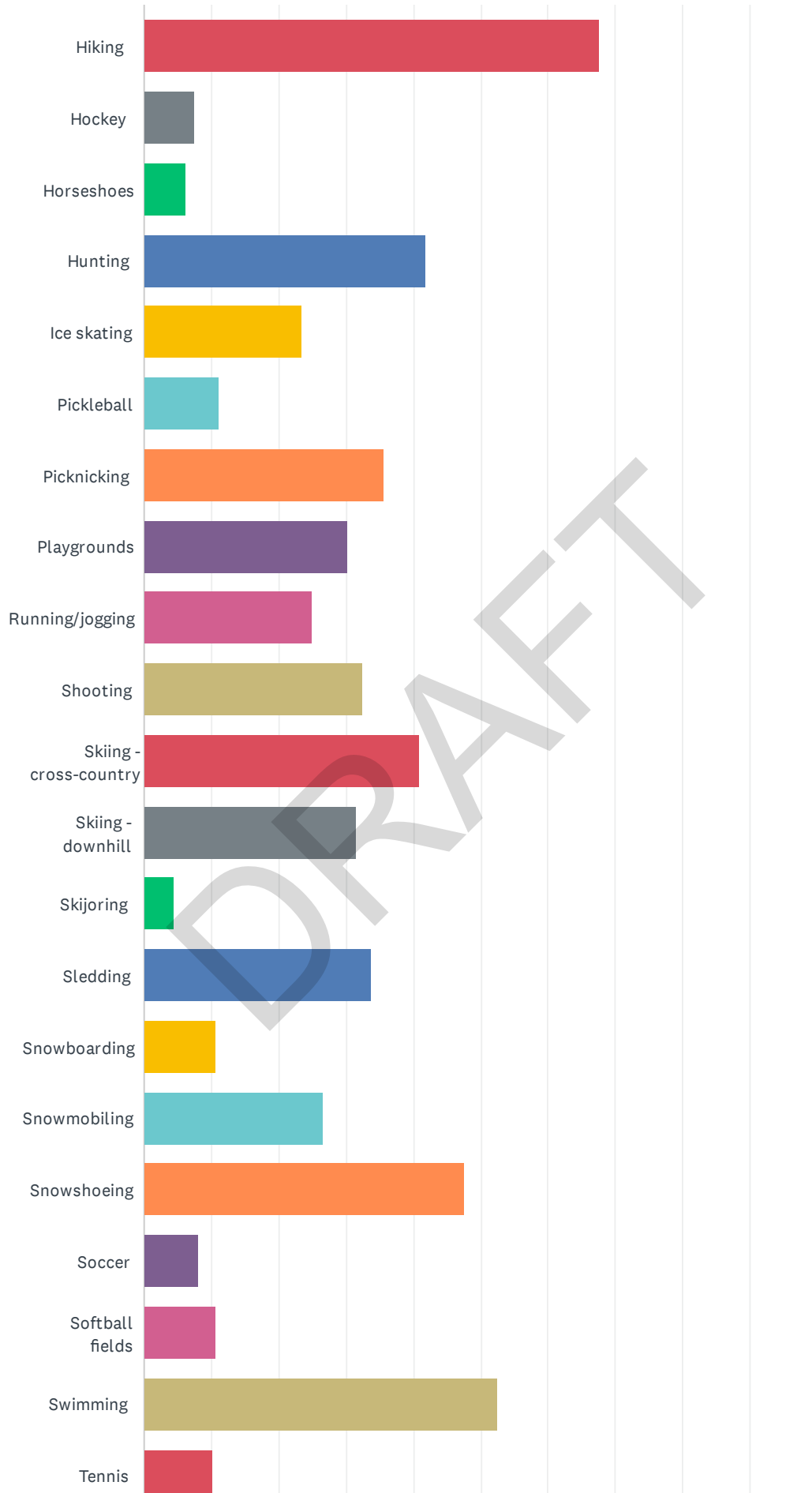
#	RESPONSES	DATE
1	Flat concrete trails would be awesome!	9/9/2022 12:42 PM
2	Difficulty walking down slopes due to knee issues...more handrails and ramps would be better than stairs.	9/4/2022 9:27 AM
3	upper limb amputee	8/30/2022 4:20 PM
4	Bathroom facilities are dirty and are very difficult to use due to inferior lighting, fixtures are old and broken and the interior walls and ceiling need to be redone. Showers would be an excellent addition!	8/29/2022 7:42 PM
5	Cisco Lake boat launch pier, parking and general launch area is not handicap friendly. Pier is narrow, no designated parking spaces for handicap vehicles and while the launch is new the pitch of the launch is steep. The launch on Thousand Island is worse in the pitch of the driveway access is extreme and very difficulty for handicap to navigate from parking area to water.	8/19/2022 11:54 AM
6	I would like a local fishing pier.	8/19/2022 10:04 AM
7	Knee issues	8/18/2022 1:29 PM
8	Not able to walk for very long time on uneven terrain.	8/18/2022 1:05 PM
9	Needs motorized wheelchair access.	8/18/2022 11:31 AM
10	difficult walking	8/18/2022 11:22 AM
11	Due to physical disability we need close parking access and level walking areas.	8/18/2022 10:37 AM
12	Most everywhere in this county if you take a hard look at sites and activities. I was always active and involved both through my employment and through volunteering. I recently became disabled with now very limited mobility and have now realized the struggles a disabled person faces to go places, attend events and volunteer to help	8/18/2022 3:44 AM
13	Double knee surgery, can't navigate all the rocks and uneven ground.	8/17/2022 3:11 PM
14	Ramps rather than steps. Higher toilet seats, plenty of seating available in all recreational areas.	8/17/2022 10:48 AM
15	Need places to sit and rest(ie; benches, chairs, etc.)	8/16/2022 11:35 PM
16	Inability to walk more than 10-15 minutes without a place to sit down	8/16/2022 5:48 PM
17	Wakefield school	8/16/2022 4:26 PM

Q6 Does anyone in your household use or take part in any of the following? (check ALL that apply)

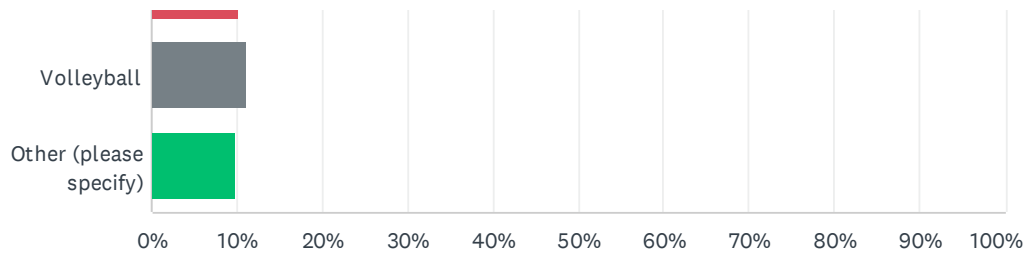
Answered: 244 Skipped: 7



2022 Gogebic County Recreation Survey



2022 Gogebic County Recreation Survey



DRAFT

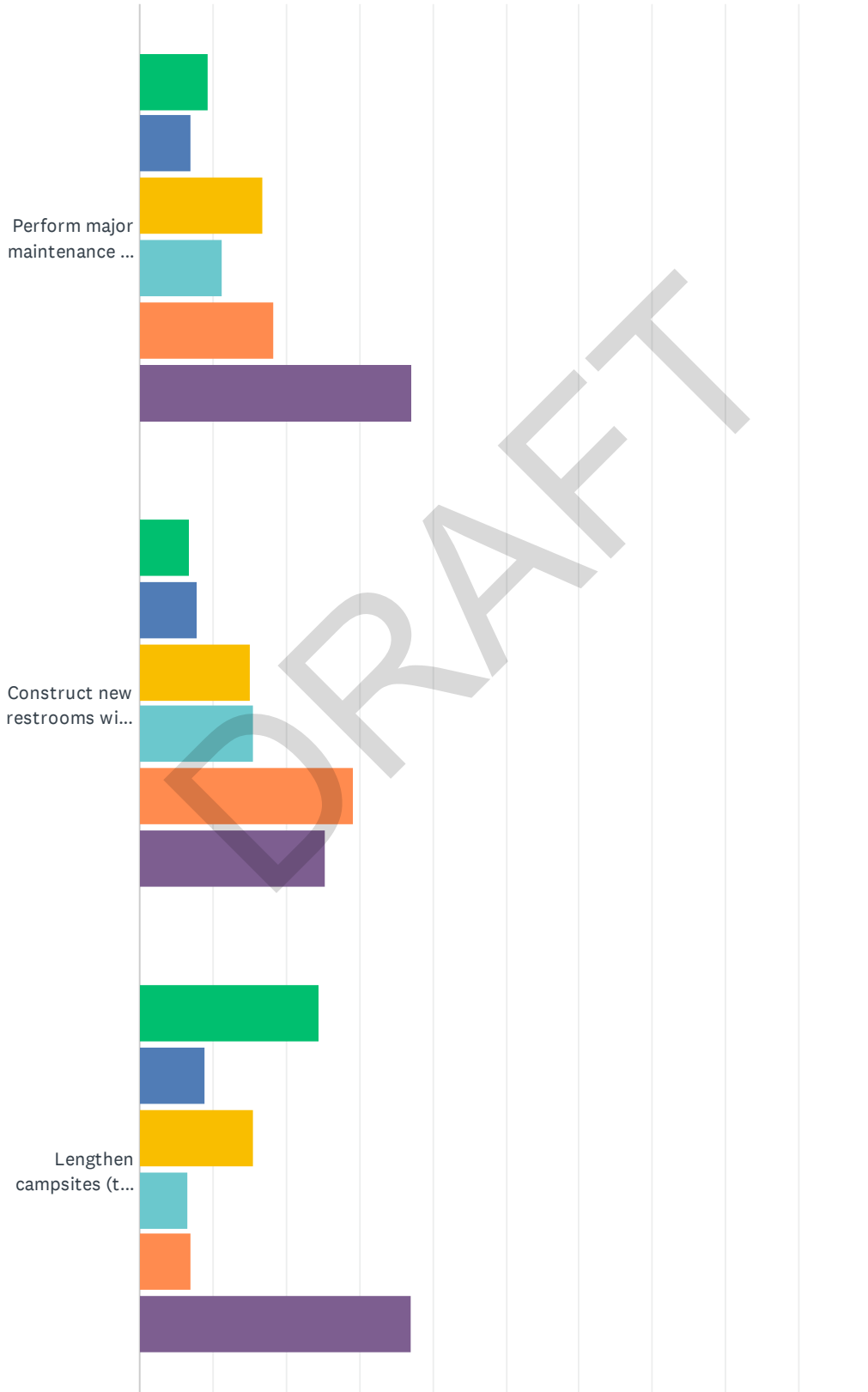
2022 Gogebic County Recreation Survey

Snowboarding	10.66%	26
Snowmobiling	26.64%	65
Snowshoeing	47.54%	116
Soccer	8.20%	20
Softball fields	10.66%	26
Swimming	52.46%	128
Tennis	10.25%	25
Volleyball	11.07%	27
Other (please specify)	9.84%	24
Total Respondents: 244		

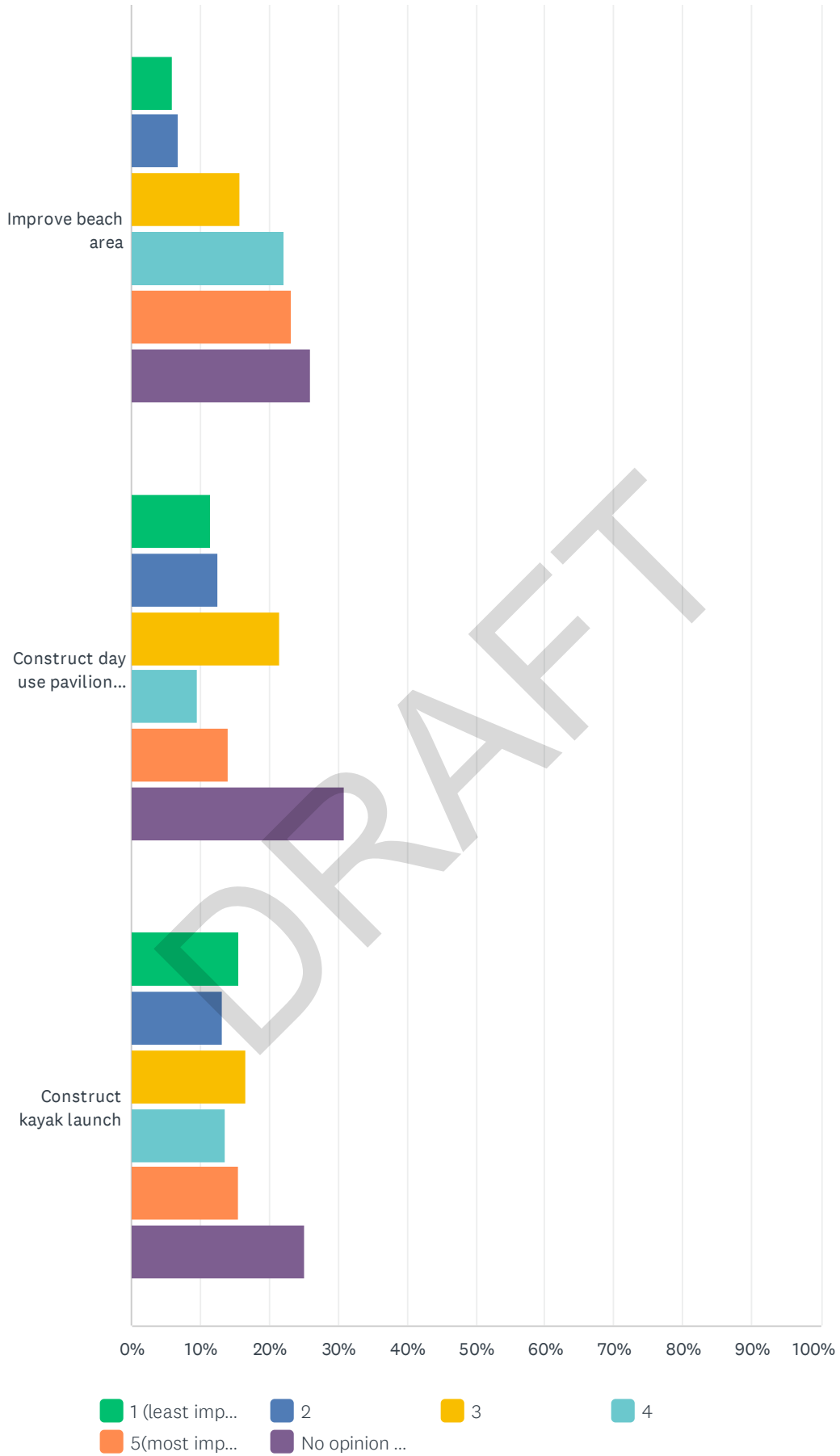
#	OTHER (PLEASE SPECIFY)	DATE
1	Fly fish, forage, photography, birdwatching, shoreline and native plant conservation/restoration. Some of these activities I participate in while in Gogebic County. Others I would do more of if it were available or safer (i.e. bicycling, dispersed or non-electric campsites, hiking, dark sky viewing/photography, astronomy))	9/14/2022 9:52 PM
2	Walking paths (if there were any - currently on the road)	8/30/2022 3:50 PM
3	Rock hounding	8/29/2022 1:27 PM
4	Rock hounding	8/26/2022 7:10 PM
5	horseback riding	8/26/2022 9:41 AM
6	Badminton	8/19/2022 11:10 PM
7	Horse back riding	8/19/2022 7:12 PM
8	Walking	8/19/2022 6:52 PM
9	Horse back riding	8/19/2022 5:07 PM
10	Horseback riding	8/19/2022 2:36 PM
11	Motorcycle riding	8/19/2022 7:34 AM
12	walking	8/18/2022 5:27 PM
13	Scenic roadtrips stopping at restaurants	8/18/2022 10:40 AM
14	Walking daily	8/18/2022 10:01 AM
15	Walking trail	8/17/2022 9:09 PM
16	Off-Highway Motorcycling (Dual Sport)	8/17/2022 3:35 PM
17	Walking	8/17/2022 10:49 AM
18	Dirt Bike	8/17/2022 10:46 AM
19	Walking	8/17/2022 9:26 AM
20	Ice climbing	8/17/2022 8:48 AM
21	Rock picking	8/16/2022 11:45 PM
22	Disc golf	8/16/2022 10:32 PM
23	Walking	8/16/2022 5:49 PM
24	Disc Golf, Rollerblading.	8/16/2022 4:24 PM

Q7 LAKE GOGEBIC COUNTY PARK (Off Highway M-64 at southern tip of lake)

Answered: 207 Skipped: 44



2022 Gogebic County Recreation Survey



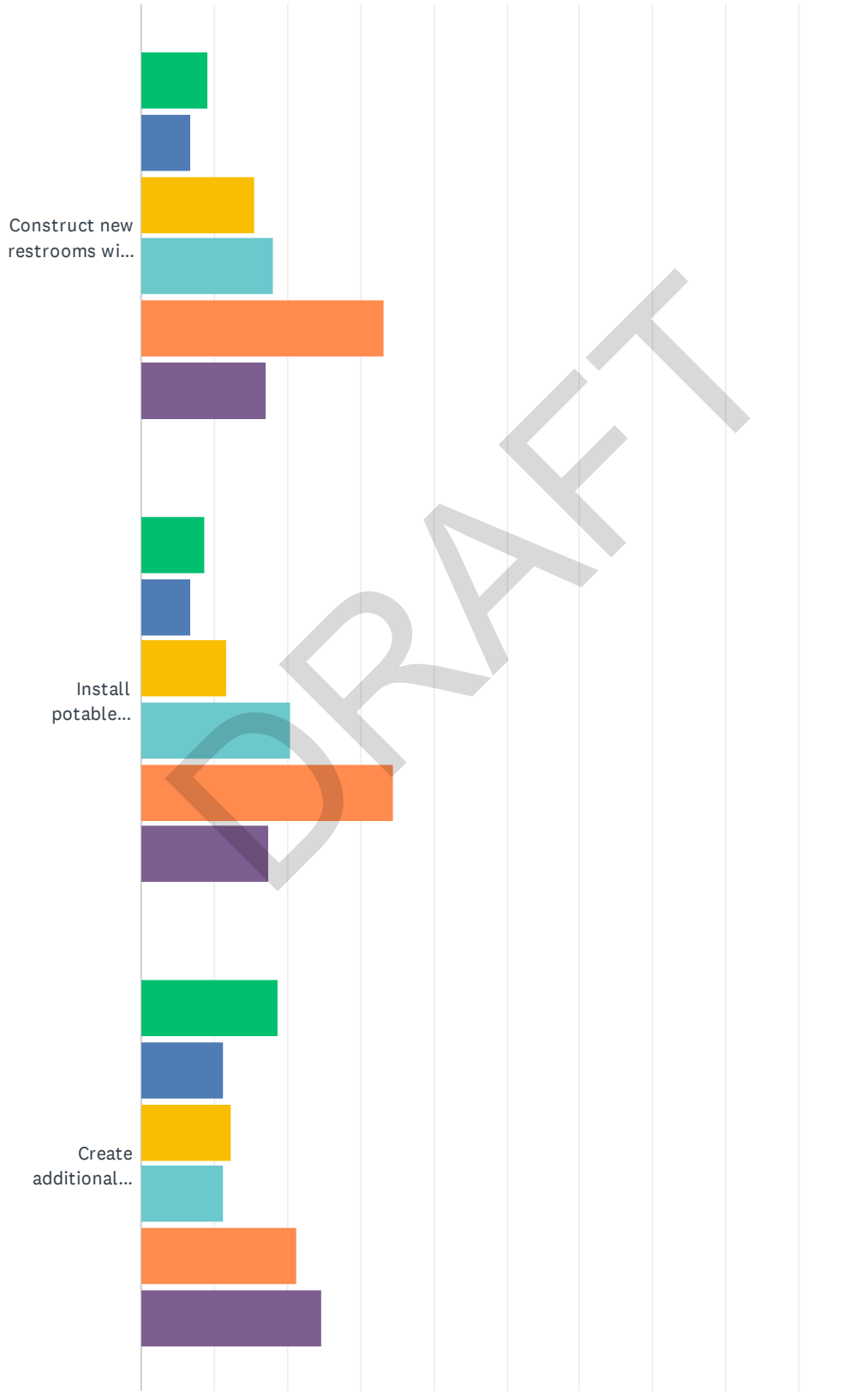
2022 Gogebic County Recreation Survey

	1 (LEAST IMPORTANT)	2	3	4	5(MOST IMPORTANT)	NO OPINION OR DON'T KNOW	TOTAL
Perform major maintenance or replacement of dock	9.41% 19	6.93% 14	16.83% 34	11.39% 23	18.32% 37	37.13% 75	202
Construct new restrooms with flush toilets	6.83% 14	7.80% 16	15.12% 31	15.61% 32	29.27% 60	25.37% 52	205
Lengthen campsites (to accommodate larger units)	24.62% 49	9.05% 18	15.58% 31	6.53% 13	7.04% 14	37.19% 74	199
Improve beach area	5.91% 12	6.90% 14	15.76% 32	22.17% 45	23.15% 47	26.11% 53	203
Construct day use pavilion(s) near beach	11.50% 23	12.50% 25	21.50% 43	9.50% 19	14.00% 28	31.00% 62	200
Construct kayak launch	15.66% 31	13.13% 26	16.67% 33	13.64% 27	15.66% 31	25.25% 50	198

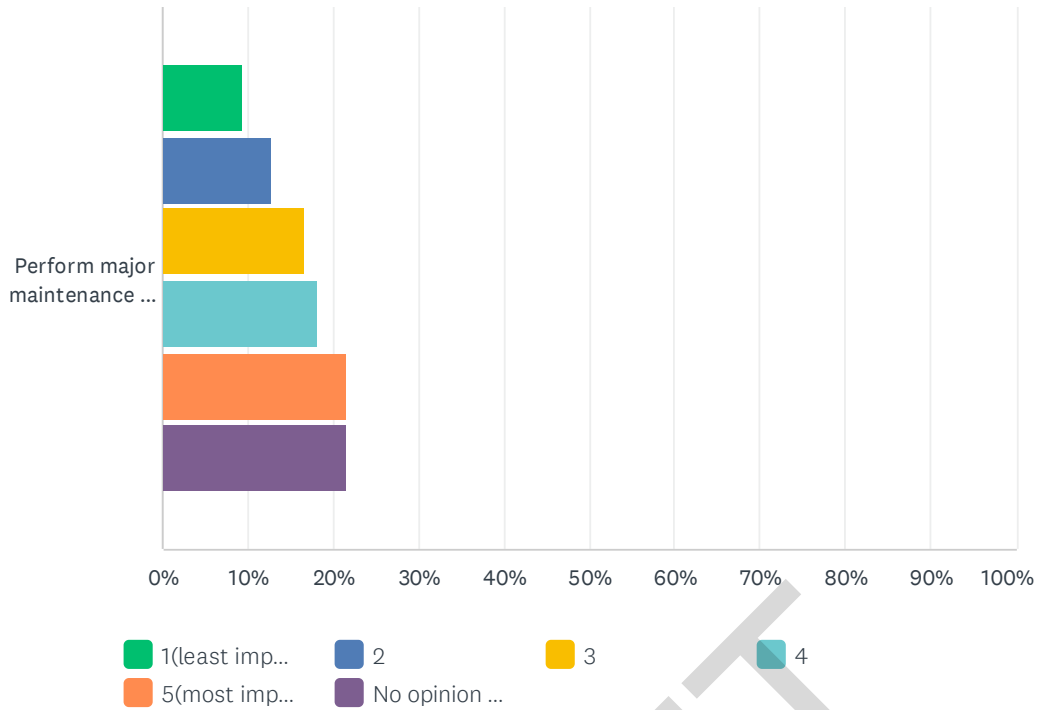
#	OTHER (PLEASE SPECIFY)	DATE
1	dark sky	9/1/2022 2:37 PM
2	Turn light by dock in toward the campground. Hard to dark sky watch	8/31/2022 3:53 PM
3	Its a great campground.its just getting a little outdated. There is alot of money coming in and it seems as though the campground hasn't been of great importance. They really need to address the dock/ beach issue. There is no place for parents or grandparents to sit and watch the kids..There is no beach area to speak of. He whole shoreline and dock are Gross and disgusting full.of seagull and goose poop. You can't even sit anywhere as the poop is all over.There has been a pile of dirt by the dock/Beach for the last few years that noone has done anything with. There should be toilets by the dock. Its a looong walk to one of the bathrooms from that area. The new playground equipment has been sitting all summer and not been put in. There also needs to be a better way to slow the vehicles down. They drive through so fast noone pays attention to the speed Limit and there is no enforcement either. Its a nice park...with a few upgrades and some much needed tlc it would be awesome! On another note the people making the decisions have no clue about camping really. Have anyone one of the board members ever camped at any one of the Parks?or maybe driven through to see what is going on? Maybe ask the people who really do camp their ideas and maybe a few of them just might work.	8/30/2022 11:35 PM
4	Showers	8/30/2022 10:09 PM
5	Find a way to minimize the light pollution caused by lighting at the park (dark skies)	8/30/2022 4:02 PM
6	Install a boat and ATV trail washing station	8/30/2022 1:34 PM
7	I find it disturbing that on the previous question (the map) Watersmeet isn't even shown. That seems to be the way with everything concerning Watersmeet, it appears that we are of no importance except when it comes to our tax dollars that the county is more than happy to collect from Watersmeet township!e	8/30/2022 8:35 AM
8	Day parking/ day use areas	8/29/2022 1:32 PM
9	CREATE ORV ACCESS TO THE PARK! ORV campers are a tremendously underserved group!	8/19/2022 12:47 PM
10	?	8/19/2022 2:28 AM
11	don't use it	8/17/2022 3:57 PM
12	Need showers and Wi-Fi need to reserve site!!	8/16/2022 10:45 PM
13	More facilities and access for wheelchairs, the elderly, and people with other physical barriers.	8/16/2022 6:46 PM
14	New shower and flushable bathroom facilities. Wi-Fi availability since reservations must be made by this way. More seasonal sites. Sewer and water sites.	8/16/2022 6:11 PM

Q8 LITTLE GIRL'S POINT COUNTY PARK(On Lake Superior in Ironwood Township)

Answered: 205 Skipped: 46



2022 Gogebic County Recreation Survey



	1(LEAST IMPORTANT)	2	3	4	5(MOST IMPORTANT)	NO OPINION OR DON'T KNOW	TOTAL
Construct new restrooms with flush toilets	9.27% 19	6.83% 14	15.61% 32	18.05% 37	33.17% 68	17.07% 35	205
Install potable drinking water system	8.78% 18	6.83% 14	11.71% 24	20.49% 42	34.63% 71	17.56% 36	205
Create additional campsites including electricity	18.81% 38	11.39% 23	12.38% 25	11.39% 23	21.29% 43	24.75% 50	202
Perform major maintenance on buildings	9.31% 19	12.75% 26	16.67% 34	18.14% 37	21.57% 44	21.57% 44	204

#	OTHER (PLEASE SPECIFY)	DATE
1	shower building with toilet and electricity	8/29/2022 8:09 PM
2	Construction of shower facilities would be a beneficial addition to the park and adding a cell tower for emergency service.	8/29/2022 7:51 PM
3	Shower's	8/29/2022 7:20 PM
4	Shoreline protection	8/29/2022 1:32 PM
5	Leave as is. It is perfect. More sites will change the reason we go there. We like rustic too! Don't need flush toilets!	8/26/2022 10:37 AM
6	Please work to improve beach access for campers that are paying to stay at the campground. It is ridiculous to try and fight crowds to get a spot on the beach when as a camper, I'm paying to stay there and day use takes up the one easy access to the beach. Possibly charge for out of state/county day use or build a path for campers exclusive beach access. This pertains mainly to the non-lake side sites.	8/22/2022 11:04 PM
7	Get WiFi or cell service out there	8/19/2022 5:38 PM
8	?	8/19/2022 2:28 AM
9	don't use it	8/17/2022 3:57 PM

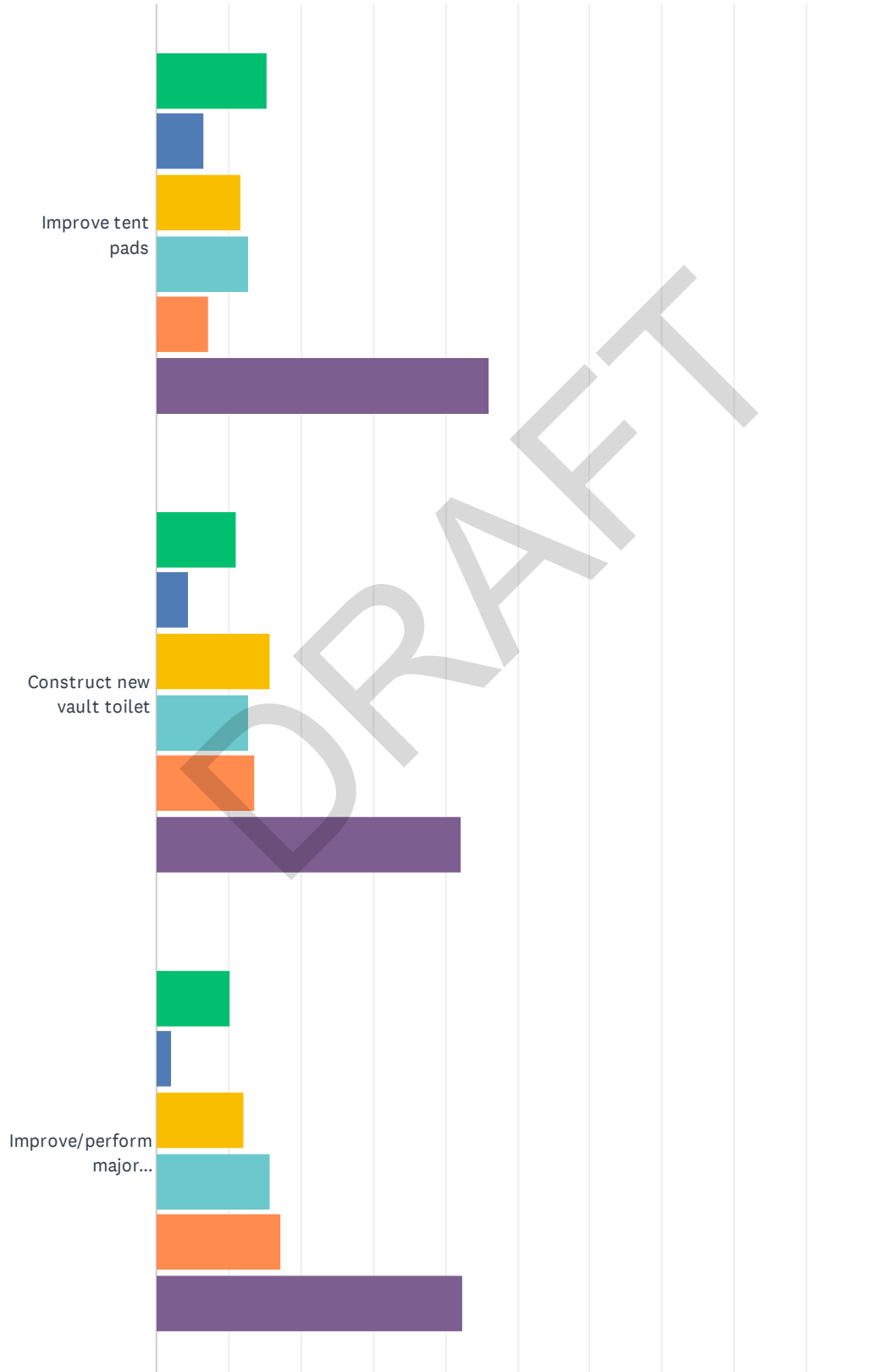
2022 Gogebic County Recreation Survey

10	Keep it the same, other than having more law enforcement presence to combat the illegal activities going on.	8/17/2022 3:39 PM
11	Develop access to the beach better, currently hazardous going down the hill.	8/17/2022 12:34 PM
12	Need phone service or internet out there. Especially in case of emergency. Or when events/weddings are held at the Lodge and people lose gps signal. They can't find the location unless they're VERY familiar with the area.	8/17/2022 10:29 AM
13	Hey improve the shore and stop erosion	8/16/2022 7:37 PM
14	Prevent land erosion.	8/16/2022 4:46 PM

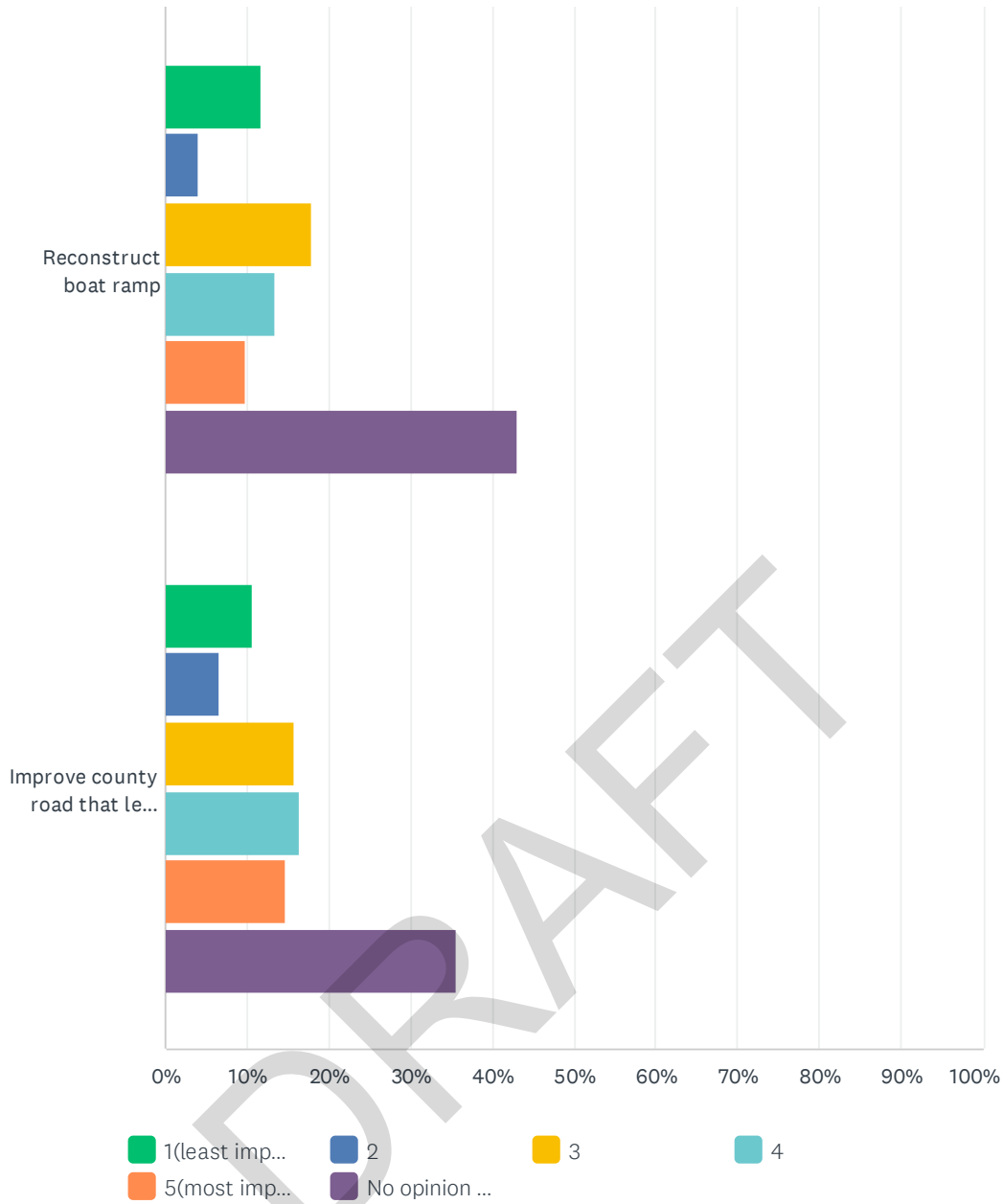
DRAFT

Q9 McDONALD LAKE COUNTY PARK(Erwin Township south of Bessemer)

Answered: 199 Skipped: 52



2022 Gogebic County Recreation Survey



	1(LEAST IMPORTANT)	2	3	4	5(MOST IMPORTANT)	NO OPINION OR DON'T KNOW	TOTAL
Improve tent pads	15.38% 30	6.67% 13	11.79% 23	12.82% 25	7.18% 14	46.15% 90	195
Construct new vault toilet	11.17% 22	4.57% 9	15.74% 31	12.69% 25	13.71% 27	42.13% 83	197
Improve/perform major maintenance on dam	10.20% 20	2.04% 4	12.24% 24	15.82% 31	17.35% 34	42.35% 83	196
Reconstruct boat ramp	11.79% 23	4.10% 8	17.95% 35	13.33% 26	9.74% 19	43.08% 84	195
Improve county road that leads to recreation area (not within the county government's direct control)	10.71% 21	6.63% 13	15.82% 31	16.33% 32	14.80% 29	35.71% 70	196

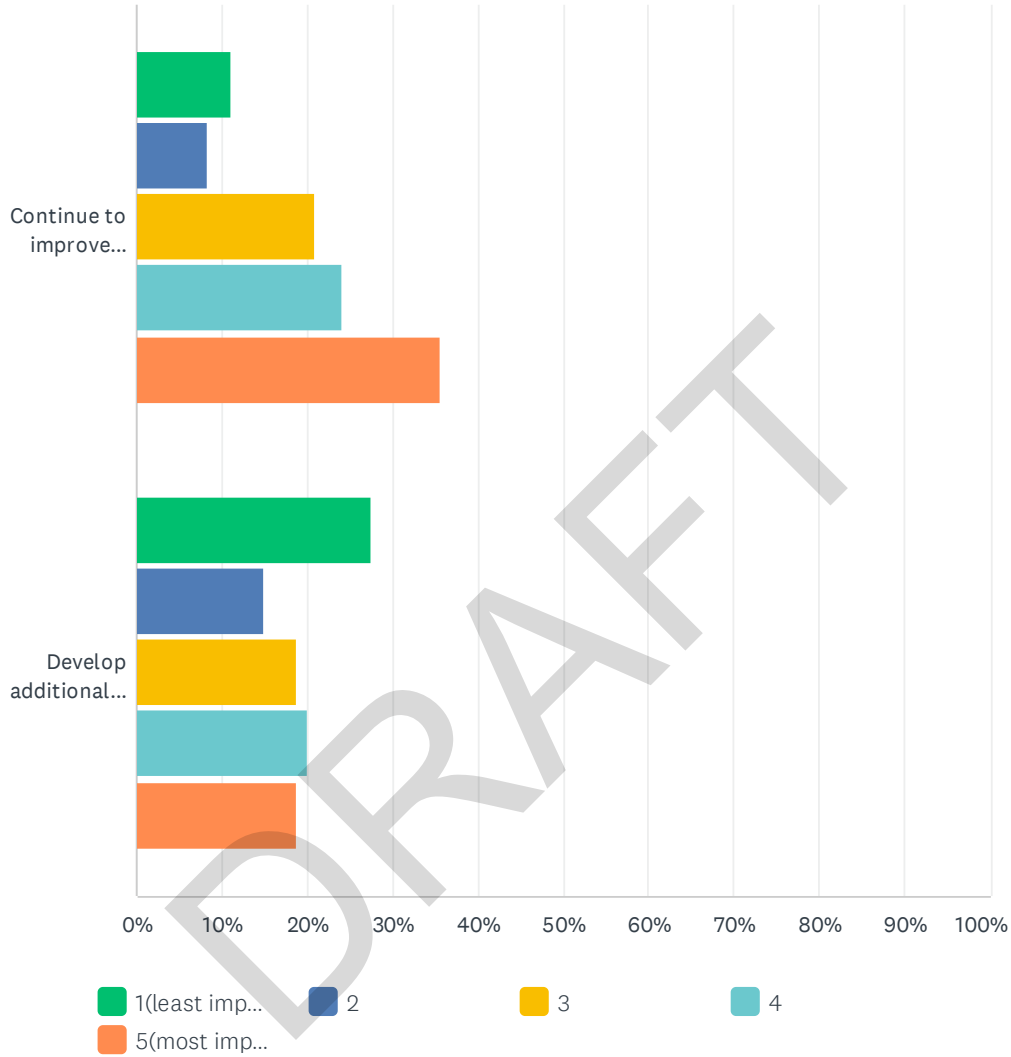
2022 Gogebic County Recreation Survey

#	OTHER (PLEASE SPECIFY)	DATE
1	Never use site	8/19/2022 5:38 PM
2	?	8/19/2022 2:28 AM
3	Kayak launch is a cool addition.	8/18/2022 10:27 AM
4	don't use it	8/17/2022 3:57 PM
5	I believe major maintenance was done to the dam. The kayak launch pad is great. Improved boat ramp would be great addition.	8/16/2022 7:56 PM
6	More tent sites along the shore. Create more trails for hiking. Expand existing acreage by purchasing adjacent land on the West side of the lake. Mcdonald's dam could be more than it is without generating too much traffic to the site. Build small secluded rustic cabins.	8/16/2022 4:46 PM

DRAFT

Q10 POWERS ROAD RECREATION AREA (Trails throughout western tip of county)

Answered: 182 Skipped: 69



	1(LEAST IMPORTANT)	2	3	4	5(MOST IMPORTANT)	TOTAL
Continue to improve existing multi-use trails	10.99% 20	8.24% 15	20.88% 38	24.18% 44	35.71% 65	182
Develop additional hunter walking trails	27.43% 48	14.86% 26	18.86% 33	20.00% 35	18.86% 33	175

#	OTHER (PLEASE SPECIFY)	DATE
1	Develop non-hunting walking trails, especially around Lake Gogebic	8/30/2022 4:02 PM
2	Day use/hiking trails are needed	8/29/2022 1:32 PM
3	Develop ORV and snowmobile one-way trails	8/19/2022 12:47 PM
4	?	8/19/2022 2:28 AM

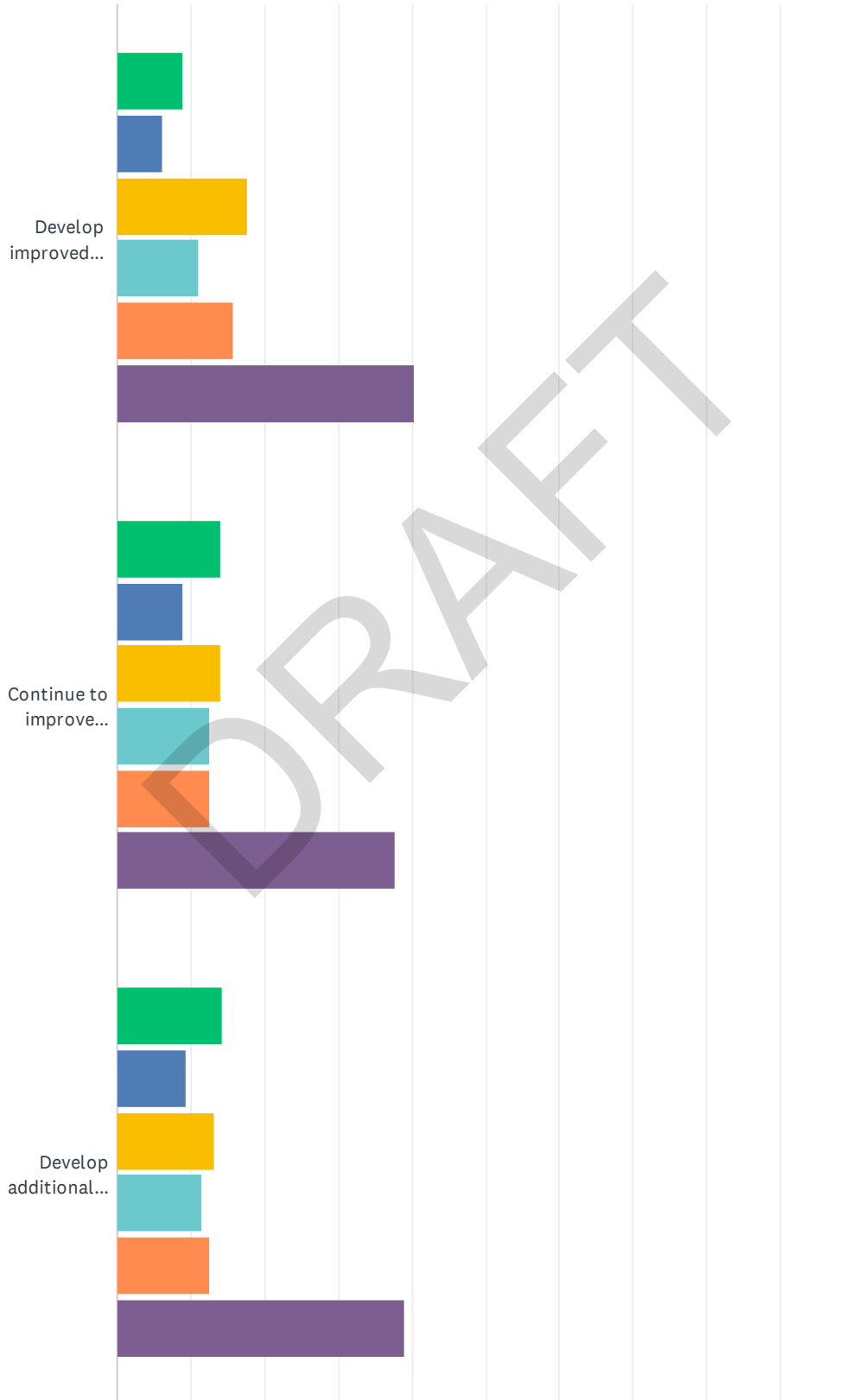
2022 Gogebic County Recreation Survey

5	Build (rebuild) the singletrack trails for motorbikes and mountain bikes	8/17/2022 3:39 PM
6	Development of purpose built mountain bike trails	8/17/2022 10:54 AM
7	Develop/support the North Country Trail so it isn't on Lake Road	8/16/2022 10:16 PM
8	Add mountain bike trails, and potential water access at Montreal River. County land should be expanded for recreation and forest preservation.	8/16/2022 4:46 PM
9	Designate mountain bike trails	8/16/2022 3:54 PM
10	Mountain Bike Trails	8/16/2022 3:28 PM

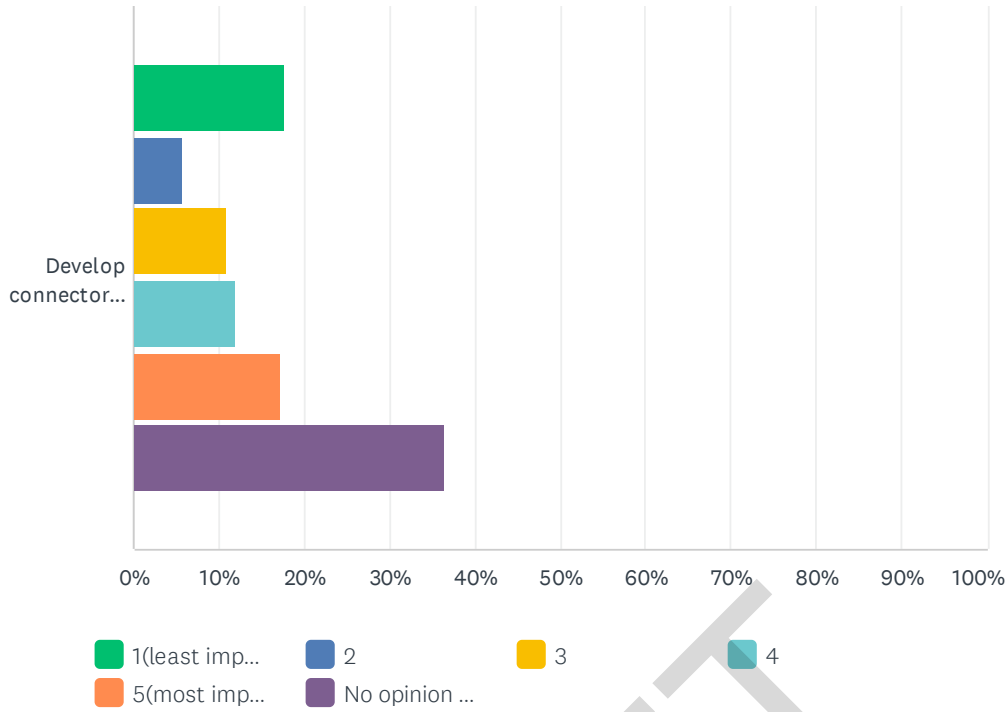
DRAFT

Q11 MOSINEE GRADE RECREATION AREA (Off CR 519 south of Wakefield)

Answered: 195 Skipped: 56



2022 Gogebic County Recreation Survey

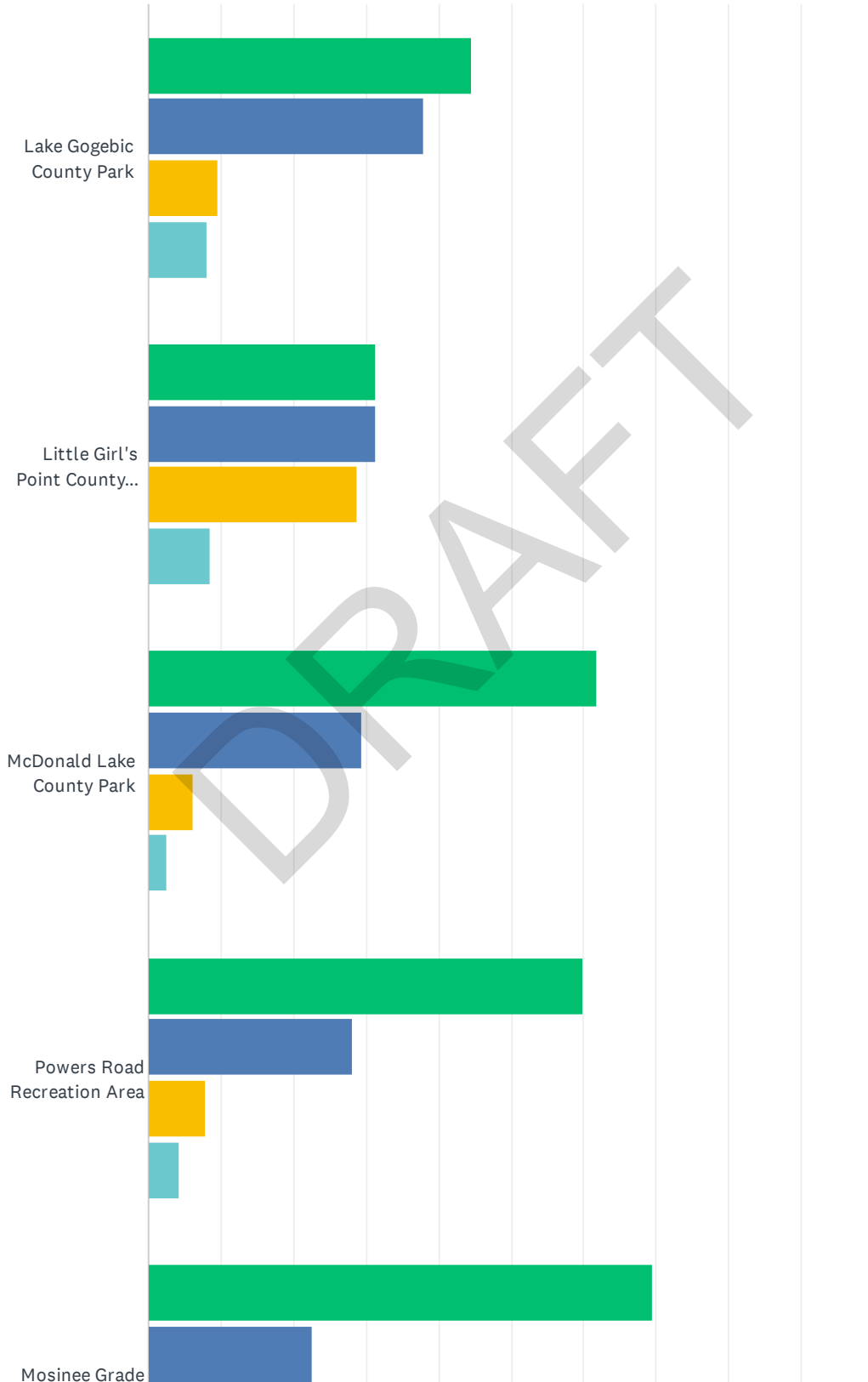


	1(LEAST IMPORTANT)	2	3	4	5(MOST IMPORTANT)	NO OPINION OR DON'T KNOW	TOTAL
Develop improved trailhead	8.90% 17	6.28% 12	17.80% 34	10.99% 21	15.71% 30	40.31% 77	191
Continue to improve existing hunter walking trails	14.14% 27	8.90% 17	14.14% 27	12.57% 24	12.57% 24	37.70% 72	191
Develop additional hunter walking trails	14.21% 27	9.47% 18	13.16% 25	11.58% 22	12.63% 24	38.95% 74	190
Develop connector routes for ORVs	17.71% 34	5.73% 11	10.94% 21	11.98% 23	17.19% 33	36.46% 70	192

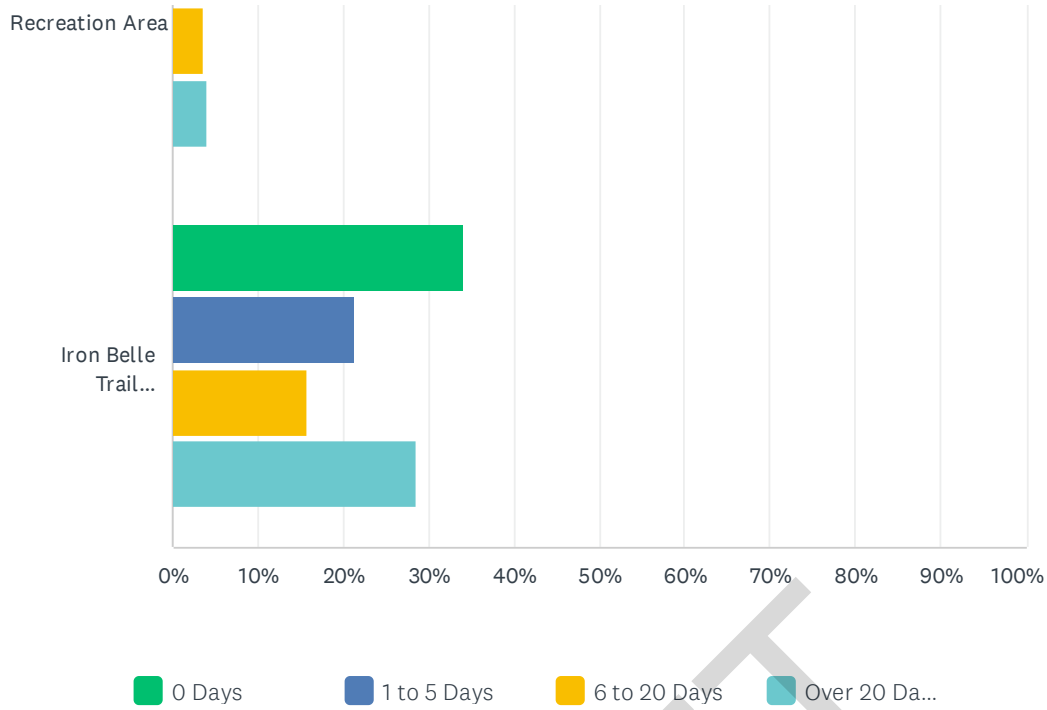
#	OTHER (PLEASE SPECIFY)	DATE
1	We need to connect 11S snowmobile trail to Ramsay and create ORV loop!	8/19/2022 12:47 PM
2	?	8/19/2022 2:28 AM

Q12 Within the last year, approximately how many days did you or someone from your household use each of the sites/facilities?

Answered: 204 Skipped: 47



2022 Gogebic County Recreation Survey



	0 DAYS	1 TO 5 DAYS	6 TO 20 DAYS	OVER 20 DAYS	TOTAL
Lake Gogebic County Park	44.50% 89	38.00% 76	9.50% 19	8.00% 16	200
Little Girl's Point County Park	31.31% 62	31.31% 62	28.79% 57	8.59% 17	198
McDonald Lake County Park	61.86% 120	29.38% 57	6.19% 12	2.58% 5	194
Powers Road Recreation Area	59.90% 115	28.13% 54	7.81% 15	4.17% 8	192
Mosinee Grade Recreation Area	69.59% 135	22.68% 44	3.61% 7	4.12% 8	194
Iron Belle Trail (Ironwood-Ramsay)	34.18% 67	21.43% 42	15.82% 31	28.57% 56	196

Gogebic County Recreation Survey 2022

Open-Ended Response Summary

Q5: Needs for specialized rec'n, including specific sites/facilities w/mobility difficulties (17 responses)

- Difficulty walking (about half)
 - Need even, level surfaces and resting spots
 - Facilities mentioned:
 - Cisco Lake launch area and parking access
 - Thousand Island launch – angle of driveway/parking access to water
 - Desire for fishing pier (unspecific)
 - Wakefield School
 - LG County Park*
 - Black River Harbor*
- * Mentioned in response to a different question*

Q6: Activities partaken in (24)

- Walking (7)
- Equestrian (4)
- Motorcycle/dirt bike (3)
- Disc golf (2)

Q7: LG County Park (14)

- Light pollution (3)
- Showers (3)
- Wi-fi – needed to make reservations (2)
- Long comment about beach maintenance and cleaning, need for toilets by dock

Q8: LGP County Park (14)

- Showers (3)
- Wi-fi/cell service (3)
- Protect shoreline / stop erosion (3)
- Keep it the same (2)
- Improve beach access (2) - one mentioned day use fee for non-camper beach use

Q9: ML County Park (6)

- Like the kayak launch (2)
- Miscellaneous improvements and expansion

Q10: PR Recreation Area (10)

- Mountain bike trails (5)

- Miscellaneous trail comments:
 - Walking, especially around Lake Gogebic
 - Hiking
 - ORV/snowmobile one-way (loop?)
 - Develop NCT to separate it from Lake Road
- Montreal River water access

Q13: Partnerships (64)

- Orgs mentioned:
 - North Country Trail Association / chapter (6)
 - Connectivity with Iron Belle
 - DNR (3)
 - ONF – not site-specific (2)
 - Sisu Dirt Crew (2)
 - Erwin Twp Historical Society (2)
 - LVD Tribe
 - ABR
 - Anderson Bluff and Rivers Trail Foundation
 - Gogebic Range Health Foundation
 - Western Gateway Trail Authority
 - International Mountain Bike Association
 - Lake Gogebic Improvement Association
 - Wolverine
 - YouthWork
- Pro-nonmotorized Trails (13)
 - X-C skiing (6)
- Pro-motorized/multi-use trails (7)
- Watersmeet area / east end (6)
- Iron Belle (5)
- Mapping/signage (4)
- Black River Falls/Harbor (4)
- Lake Gogebic (4)
- Fish management/stocking (3)
- Grants (3)
- Boat wash stations (2)
- Public land acquisition/connectivity (2)
- Better control ORV/snowmobile traffic (2)
- ONF campgrounds
 - Langford Lake
 - Moosehead Lake (road to)

Q14: Other Rec Site Improvements/Expansions (43)

- Ironwood city parks (6)

- County fairgrounds (4)
- Other local facilities (3)
- Ottawa facilities ()
 - Sylvania (2)
 - Bobcat Lake (2)
 - Marion Lake boat landing
 - Black River Harbor
 - Wolf Mountain
 - Alligator Eye
- Lost Lake (2)
- GCC pool – open to public / county funds (2)
- Montreal Gorge (2)
- Mount Zion MTB trails (2)
- Little Girls Point beach access
- Bond Falls Lake
- Agonikak Trail
- Iron Belle Trail

Q15: Additional recreation projects and general comments/suggestions (56)

- Lots of general hiking/biking trail comments
- Paved/smooth-surface nonmotorized trails specifically (7)
- City of Ironwood parks (5)
- Mountain bike trails (5)
- Iron Belle Trail (5)
- Pickleball (4)
- X-C ski trails (3)
- County fairgrounds (3)
- ATV/ORV trails (2)
- Ice skating rink (2)
- Shooting range (2)

DRAFT

Appendix F:

Public Review and Hearing Notice and Affidavit

DRAFT

Appendix G:

Public Hearing Meeting Minutes

Appendix H:
County Board of Commissioners Adoption Resolution